

ATP6V0D1 Antibody

Purified Rabbit Polyclonal Antibody (Pab)

Catalog # AP50719

Product Information

Application	WB
Primary Accession	P61421
Reactivity	Human, Mouse, Rat
Host	Rabbit
Clonality	Polyclonal
Calculated MW	40329

Additional Information

Gene ID	9114
Other Names	V-type proton ATPase subunit d 1, V-ATPase subunit d 1, 32 kDa accessory protein, V-ATPase 40 kDa accessory protein, V-ATPase AC39 subunit, p39, Vacuolar proton pump subunit d 1, ATP6V0D1, ATP6D, VPATPD
Target/Specificity	KLH-conjugated synthetic peptide encompassing a sequence within the center region of human ATP6V0D1. The exact sequence is proprietary.
Dilution	WB~~ 1:1000
Storage	Store at -20 °C.Stable for 12 months from date of receipt

Protein Information

Name	ATP6V0D1 (HGNC:13724)
Synonyms	ATP6D, VPATPD
Function	<p>Subunit of the V0 complex of vacuolar(H⁺)-ATPase (V-ATPase), a multisubunit enzyme composed of a peripheral complex (V1) that hydrolyzes ATP and a membrane integral complex (V0) that translocates protons (PubMed:28296633, PubMed:30374053, PubMed:33065002). V-ATPase is responsible for acidifying and maintaining the pH of intracellular compartments and in some cell types, is targeted to the plasma membrane, where it is responsible for acidifying the extracellular environment (PubMed:30374053). May play a role in coupling of proton transport and ATP hydrolysis (By similarity). In aerobic conditions, involved in intracellular iron homeostasis, thus triggering the activity of Fe(2+) prolyl hydroxylase (PHD) enzymes, and leading to HIF1A hydroxylation and subsequent proteasomal degradation (PubMed:28296633). May play a role in cilium biogenesis through regulation of the transport and the localization of proteins to the cilium (By similarity).</p>

Cellular Location	Membrane; Peripheral membrane protein; Cytoplasmic side. Lysosome membrane; Peripheral membrane protein. Cytoplasmic vesicle, clathrin-coated vesicle membrane {ECO:0000250 UniProtKB:P61420}; Peripheral membrane protein. Note=Localizes to centrosome and the base of the cilium {ECO:0000250 UniProtKB:Q6PGV1}
Tissue Location	Ubiquitous.

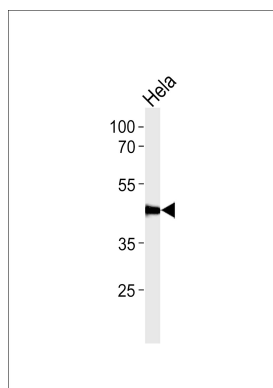
Background

Subunit of the integral membrane V0 complex of vacuolar ATPase. Vacuolar ATPase is responsible for acidifying a variety of intracellular compartments in eukaryotic cells, thus providing most of the energy required for transport processes in the vacuolar system. May play a role in coupling of proton transport and ATP hydrolysis (By similarity). May play a role in cilium biogenesis through regulation of the transport and the localization of proteins to the cilium (By similarity).

References

van Hille B.,et al.Biochem. Biophys. Res. Commun. 197:15-21(1993).
 Agarwal A.K.,et al.Biochem. Biophys. Res. Commun. 279:543-547(2000).
 Bhat K.S.,et al.Submitted (NOV-1992) to the EMBL/GenBank/DDBJ databases.
 Smith A.N.,et al.Gene 297:169-177(2002).
 Burkard T.R.,et al.BMC Syst. Biol. 5:17-17(2011).

Images



Western blot analysis of lysate from HeLa cell line, using ATP6V0D1 Antibody was diluted at 1:1000. A goat anti-rabbit IgG H&L(HRP) at 1:5000 dilution was used as the secondary antibody. Lysate at 35ug.

Please note: All products are 'FOR RESEARCH USE ONLY. NOT FOR USE IN DIAGNOSTIC OR THERAPEUTIC PROCEDURES'.