

# RIMKLB Antibody (N-term)

Affinity Purified Rabbit Polyclonal Antibody (Pab)

Catalog # AP5072a

## Product Information

---

<b>Application</b>	WB, IHC-P, FC, E
<b>Primary Accession</b>	<a href="#">Q9ULI2</a>
<b>Other Accession</b>	<a href="#">Q80WS1</a> , <a href="#">Q0VCE9</a>
<b>Reactivity</b>	Human, Mouse
<b>Predicted</b>	Bovine
<b>Host</b>	Rabbit
<b>Clonality</b>	Polyclonal
<b>Isotype</b>	Rabbit IgG
<b>Clone Names</b>	RB26088
<b>Calculated MW</b>	42464
<b>Antigen Region</b>	1-30

## Additional Information

---

<b>Gene ID</b>	57494
<b>Other Names</b>	Beta-citrylglutamate synthase B, N-acetyl-aspartylglutamate synthetase B, NAAG synthetase B, NAAGS, Ribosomal protein S6 modification-like protein B, RIMKLB, FAM80B, KIAA1238
<b>Target/Specificity</b>	This RIMKLB antibody is generated from rabbits immunized with a KLH conjugated synthetic peptide between 1-30 amino acids from the N-terminal region of human RIMKLB.
<b>Dilution</b>	WB~~1:1000 IHC-P~~1:100~500 FC~~1:10~50 E~~Use at an assay dependent concentration.
<b>Format</b>	Purified polyclonal antibody supplied in PBS with 0.09% (W/V) sodium azide. This antibody is purified through a protein A column, followed by peptide affinity purification.
<b>Storage</b>	Maintain refrigerated at 2-8°C for up to 2 weeks. For long term storage store at -20°C in small aliquots to prevent freeze-thaw cycles.
<b>Precautions</b>	RIMKLB Antibody (N-term) is for research use only and not for use in diagnostic or therapeutic procedures.

## Protein Information

---

<b>Name</b>	RIMKLB
-------------	--------

## Synonyms

FAM80B, KIAA1238

## Function

Catalyzes the synthesis of beta-citryl-L-glutamate and N-acetyl-L-aspartyl-L-glutamate. Beta-citryl-L-glutamate is synthesized more efficiently than N-acetyl-L-aspartyl-L-glutamate.

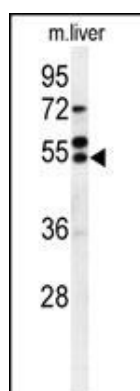
## Cellular Location

Cytoplasm.

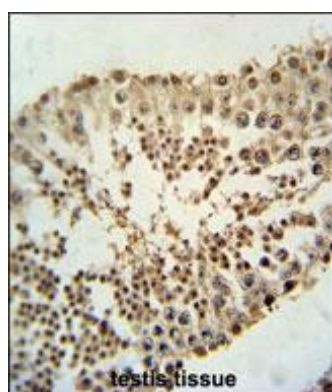
## References

Gerhard, D.S., et al. Genome Res. 14 (10B), 2121-2127 (2004)

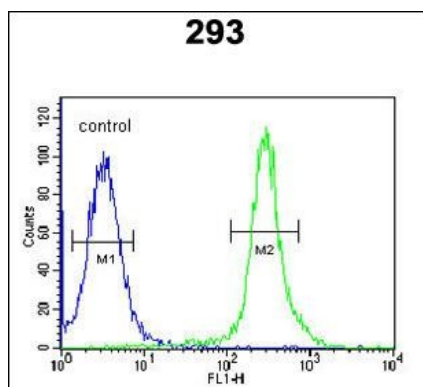
## Images



Western blot analysis of RIMKLB Antibody (N-term) (Cat. #AP5072a) in mouse liver tissue lysates (35ug/lane). RIMKLB (arrow) was detected using the purified Pab.



RIMKLB Antibody (N-term) (Cat. #AP5072a) immunohistochemistry analysis in formalin fixed and paraffin embedded human testis tissue followed by peroxidase conjugation of the secondary antibody and DAB staining. This data demonstrates the use of the RIMKLB Antibody (N-term) for immunohistochemistry. Clinical relevance has not been evaluated.



RIMKLB Antibody (N-term) (Cat. #AP5072a) flow cytometric analysis of 293 cells (right histogram) compared to a negative control cell (left histogram). FITC-conjugated goat-anti-rabbit secondary antibodies were used for the analysis.

Please note: All products are 'FOR RESEARCH USE ONLY. NOT FOR USE IN DIAGNOSTIC OR THERAPEUTIC PROCEDURES'.