

PDCD1 Antibody

Purified Rabbit Polyclonal Antibody (Pab)

Catalog # AP50734

Product Information

Application	WB
Primary Accession	Q15116
Reactivity	Human, Mouse, Rat
Host	Rabbit
Clonality	Polyclonal
Calculated MW	31647

Additional Information

Gene ID	5133
Other Names	Programmed cell death protein 1, Protein PD-1, hPD-1, CD279, PDCD1, PD1
Dilution	WB~~ 1:1000
Storage	Store at -20 °C.Stable for 12 months from date of receipt

Protein Information

Name	PDCD1 {ECO:0000303 PubMed:7851902, ECO:0000312 HGNC:HGNC:8760}
Function	Inhibitory receptor on antigen activated T-cells that plays a critical role in induction and maintenance of immune tolerance to self (PubMed: 21276005 , PubMed: 37208329). Delivers inhibitory signals upon binding to ligands CD274/PDCD1L1 and CD273/PDCD1LG2 (PubMed: 21276005). Following T-cell receptor (TCR) engagement, PDCD1 associates with CD3- TCR in the immunological synapse and directly inhibits T-cell activation (By similarity). Suppresses T-cell activation through the recruitment of PTPN11/SHP-2: following ligand-binding, PDCD1 is phosphorylated within the ITSM motif, leading to the recruitment of the protein tyrosine phosphatase PTPN11/SHP-2 that mediates dephosphorylation of key TCR proximal signaling molecules, such as ZAP70, PRKCQ/PKCtheta and CD247/CD3zeta (By similarity).
Cellular Location	Cell membrane; Single-pass type I membrane protein

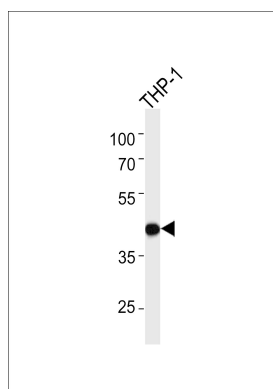
Background

Inhibitory cell surface receptor involved in the regulation of T-cell function during immunity and tolerance. Upon ligand binding, inhibits T-cell effector functions in an antigen- specific manner. Possible cell death inducer, in association with other factors.

References

Shinohara T.,et al.Genomics 23:704-706(1994).
Finger L.R.,et al.Gene 197:177-187(1997).
Finger L.R.,et al.Gene 203:253-253(1997).
Prokunina L.,et al.Nat. Genet. 32:666-669(2002).
He X.,et al.Submitted (FEB-2003) to the EMBL/GenBank/DDBJ databases.

Images



Western blot analysis of lysate from THP-1 cell line,using PDCD1 Antibody was diluted at 1:1000. A goat anti-rabbit IgG H&L(HRP) at 1:5000 dilution was used as the secondary antibody.Lysate at 35ug.

Please note: All products are 'FOR RESEARCH USE ONLY. NOT FOR USE IN DIAGNOSTIC OR THERAPEUTIC PROCEDURES'.