

CLDN6 Antibody

Purified Rabbit Polyclonal Antibody (Pab)

Catalog # AP50737

Product Information

Application	WB, IF, IHC
Primary Accession	P56747
Reactivity	Human
Host	Rabbit
Clonality	polyclonal
Calculated MW	23292

Additional Information

Gene ID	9074
Other Names	Claudin-6, Skullin, CLDN6
Dilution	WB~~1:1000 IF~~1:100 IHC~~1:50-100
Format	Rabbit IgG in phosphate buffered saline (without Mg ²⁺ and Ca ²⁺), pH 7.4, 150mM NaCl, 0.09% (W/V) sodium azide and 50% glycerol.
Storage Conditions	-20°C

Protein Information

Name	CLDN6
Function	Plays a major role in tight junction-specific obliteration of the intercellular space.
Cellular Location	Cell junction, tight junction {ECO:0000250 UniProtKB:Q9Z262}. Cell membrane; Multi-pass membrane protein
Tissue Location	Expressed in the liver, in peripheral blood mononuclear cells and hepatocarcinoma cell lines

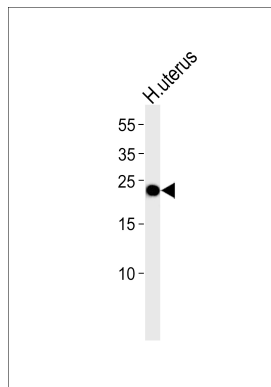
Background

Plays a major role in tight junction-specific obliteration of the intercellular space (By similarity).

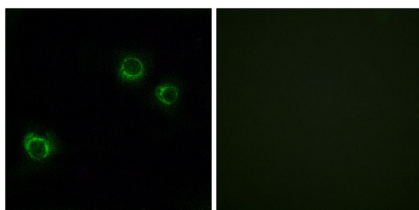
References

Keen T.J.,et al.Submitted (SEP-1999) to the EMBL/GenBank/DDBJ databases.
Troy T.,et al.Submitted (FEB-2001) to the EMBL/GenBank/DDBJ databases.
Clark H.F.,et al.Genome Res. 13:2265-2270(2003).
Kalnine N.,et al.Submitted (OCT-2004) to the EMBL/GenBank/DDBJ databases.
Otsuki T.,et al.DNA Res. 12:117-126(2005).

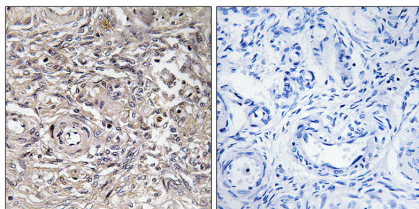
Images



Western blot analysis of lysate from human uterus tissue lysate,using CLDN6 Antibody(AP50737). AP50737 was diluted at 1:1000. A goat anti-rabbit IgG H&L(HRP) at 1:5000 dilution was used as the secondary antibody.Lysate at 35ug.



Immunofluorescence analysis of HUVEC cells, using CLDN6 antibody.



Immunohistochemistry analysis of paraffin-embedded human ovary tissue using CLDN6 antibody.

Please note: All products are 'FOR RESEARCH USE ONLY. NOT FOR USE IN DIAGNOSTIC OR THERAPEUTIC PROCEDURES'.