

BAX Antibody

Purified Rabbit Polyclonal Antibody (Pab)

Catalog # AP50740

Product Information

Application	WB, IF, IHC
Primary Accession	Q07812
Reactivity	Human, Mouse, Rat
Host	Rabbit
Clonality	polyclonal
Calculated MW	21184

Additional Information

Gene ID	581
Dilution	WB~~1:1000 IF~~1:100 IHC~~1:50-100
Format	Rabbit IgG in phosphate buffered saline (without Mg ²⁺ and Ca ²⁺), pH 7.4, 150mM NaCl, 0.09% (W/V) sodium azide and 50% glycerol.
Storage Conditions	-20°C

Protein Information

Name	BAX
Synonyms	BCL2L4
Function	<p>Plays a role in the mitochondrial apoptotic process (PubMed: 10772918, PubMed:11060313, PubMed:16113678, PubMed:16199525, PubMed:18948948, PubMed:21199865, PubMed:21458670, PubMed:25609812, PubMed:36361894, PubMed:8358790, PubMed:8521816). Under normal conditions, BAX is largely cytosolic via constant retrotranslocation from mitochondria to the cytosol mediated by BCL2L1/Bcl-xL, which avoids accumulation of toxic BAX levels at the mitochondrial outer membrane (MOM) (PubMed:21458670). Under stress conditions, undergoes a conformation change that causes translocation to the mitochondrion membrane, leading to the release of cytochrome c that then triggers apoptosis (PubMed:10772918, PubMed:11060313, PubMed:16113678, PubMed:16199525, PubMed:18948948, PubMed:21199865, PubMed:21458670, PubMed:25609812, PubMed:8358790, PubMed:8521816). Promotes activation of CASP3, and thereby apoptosis (PubMed:10772918, PubMed:11060313, PubMed:16113678, PubMed:16199525, PubMed:18948948, PubMed:21199865, PubMed:21458670, PubMed:25609812, PubMed:8358790, PubMed:8521816).</p>

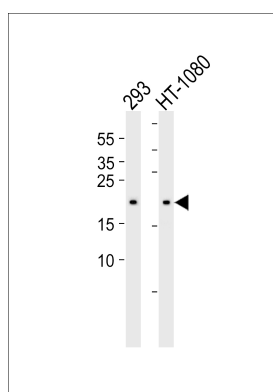
Cellular Location

[Isoform Alpha]: Mitochondrion outer membrane; Single-pass membrane protein. Cytoplasm. Nucleus Note=Colocalizes with 14-3-3 proteins in the cytoplasm. Under stress conditions, undergoes a conformation change that causes release from JNK-phosphorylated 14-3-3 proteins and translocation to the mitochondrion membrane. Upon Sendai virus infection, recruited to the mitochondrion through interaction with IRF3 (PubMed:25609812) [Isoform Gamma]: Cytoplasm.

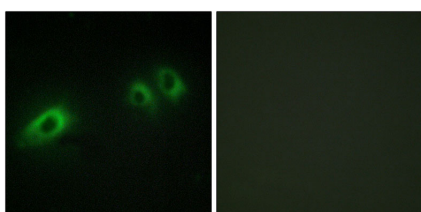
Tissue Location

Expressed in a wide variety of tissues. Isoform Psi is found in glial tumors. Isoform Alpha is expressed in spleen, breast, ovary, testis, colon and brain, and at low levels in skin and lung Isoform Sigma is expressed in spleen, breast, ovary, testis, lung, colon, brain and at low levels in skin. Isoform Alpha and isoform Sigma are expressed in pro-myelocytic leukemia, histiocytic lymphoma, Burkitt's lymphoma, T-cell lymphoma, lymphoblastic leukemia, breast adenocarcinoma, ovary adenocarcinoma, prostate carcinoma, prostate adenocarcinoma, lung carcinoma, epidermoid carcinoma, small cell lung carcinoma and colon adenocarcinoma cell lines

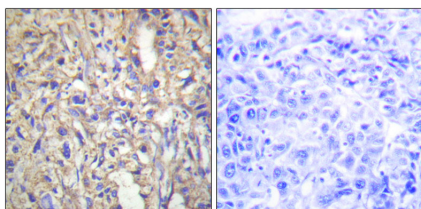
Images



Western blot analysis of lysates from 293, HT-1080 cell line (from left to right), using BAX Antibody (AP50740). AP50740 was diluted at 1:1000 at each lane. A goat anti-rabbit IgG H&L (HRP) at 1:5000 dilution was used as the secondary antibody. Lysates at 35 µg per lane.



Immunofluorescence analysis of HUVEC cells, using BAX antibody.



Immunohistochemistry analysis of paraffin-embedded human liver carcinoma tissue using BAX antibody.

Please note: All products are 'FOR RESEARCH USE ONLY. NOT FOR USE IN DIAGNOSTIC OR THERAPEUTIC PROCEDURES'.