

CDH17 Antibody

Purified Rabbit Polyclonal Antibody (Pab)

Catalog # AP50744

Product Information

Application	WB, IF
Primary Accession	Q12864
Reactivity	Human
Host	Rabbit
Clonality	polyclonal
Calculated MW	92219

Additional Information

Gene ID	1015
Other Names	Cadherin-17, Intestinal peptide-associated transporter HPT-1, Liver-intestine cadherin, LI-cadherin, CDH17
Dilution	WB~~1:1000 IF~~1:100
Format	Rabbit IgG in phosphate buffered saline (without Mg2+ and Ca2+), pH 7.4, 150mM NaCl, 0.09% (W/V) sodium azide and 50% glycerol.
Storage Conditions	-20°C

Protein Information

Name	CDH17
Function	Cadherins are calcium-dependent cell adhesion proteins. They preferentially interact with themselves in a homophilic manner in connecting cells; cadherins may thus contribute to the sorting of heterogeneous cell types. LI-cadherin may have a role in the morphological organization of liver and intestine. Involved in intestinal peptide transport.
Cellular Location	Cell membrane; Single-pass type I membrane protein
Tissue Location	Expressed in the gastrointestinal tract and pancreatic duct. Not detected in kidney, lung, liver, brain, adrenal gland and skin.

Background

Cadherins are calcium-dependent cell adhesion proteins. They preferentially interact with themselves in a homophilic manner in connecting cells; cadherins may thus contribute to the sorting of heterogeneous cell

types. LI-cadherin may have a role in the morphological organization of liver and intestine. Involved in intestinal peptide transport.

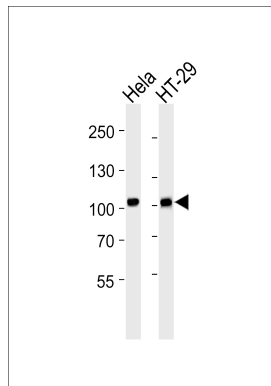
References

Dantzig A.H.,et al.Science 264:430-433(1994).

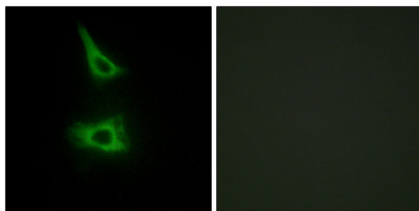
Boettinger A.,et al.Submitted (DEC-1994) to the EMBL/GenBank/DDBJ databases.

Nusbaum C.,et al.Nature 439:331-335(2006).

Images



Western blot analysis of lysates from HeLa, HT-29 cell line (from left to right), using CDH17 Antibody (AP50744). AP50744 was diluted at 1:1000 at each lane. A goat anti-rabbit IgG H&L (HRP) at 1:5000 dilution was used as the secondary antibody. Lysates at 35 µg per lane.



Immunofluorescence analysis of HeLa cells, using CDH17 antibody.

Please note: All products are 'FOR RESEARCH USE ONLY. NOT FOR USE IN DIAGNOSTIC OR THERAPEUTIC PROCEDURES'.