

PSMC6 Antibody

Purified Rabbit Polyclonal Antibody (Pab)

Catalog # AP50752

Product Information

Application	WB
Primary Accession	P62333
Reactivity	Human, Mouse
Host	Rabbit
Clonality	polyclonal
Calculated MW	44173

Additional Information

Gene ID	5706
Other Names	26S protease regulatory subunit 10B, 26S proteasome AAA-ATPase subunit RPT4, Proteasome 26S subunit ATPase 6, Proteasome subunit p42, PSMC6, SUG2
Dilution	WB~~1:1000
Format	Rabbit IgG in phosphate buffered saline (without Mg ²⁺ and Ca ²⁺), pH 7.4, 150mM NaCl, 0.09% (W/V) sodium azide and 50% glycerol.
Storage Conditions	-20°C

Protein Information

Name	PSMC6
Synonyms	SUG2
Function	Component of the 26S proteasome, a multiprotein complex involved in the ATP-dependent degradation of ubiquitinated proteins. This complex plays a key role in the maintenance of protein homeostasis by removing misfolded or damaged proteins, which could impair cellular functions, and by removing proteins whose functions are no longer required. Therefore, the proteasome participates in numerous cellular processes, including cell cycle progression, apoptosis, or DNA damage repair. PSMC6 belongs to the heterohexameric ring of AAA (ATPases associated with diverse cellular activities) proteins that unfolds ubiquitinated target proteins that are concurrently translocated into a proteolytic chamber and degraded into peptides.
Cellular Location	Cytoplasm. Nucleus.

Background

The 26S protease is involved in the ATP-dependent degradation of ubiquitinated proteins. The regulatory (or ATPase) complex confers ATP dependency and substrate specificity to the 26S complex.

References

Fujiwara T.,et al.FEBS Lett. 387:184-188(1996).

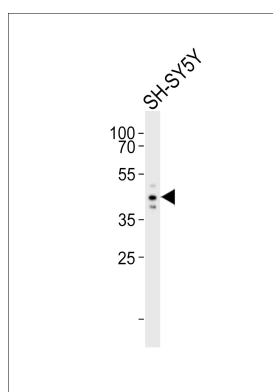
Li Y.,et al.Submitted (MAY-1997) to the EMBL/GenBank/DDBJ databases.

Kalnina N.,et al.Submitted (MAY-2003) to the EMBL/GenBank/DDBJ databases.

Ebert L.,et al.Submitted (JUN-2004) to the EMBL/GenBank/DDBJ databases.

Ota T.,et al.Nat. Genet. 36:40-45(2004).

Images



Western blot analysis of lysate from SH-SY5Y cell line,using PSMC6 Antibody(AP50752). AP50752 was diluted at 1:1000. A goat anti-rabbit IgG H&L(HRP) at 1:5000 dilution was used as the secondary antibody.Lysate at 35ug.

Please note: All products are 'FOR RESEARCH USE ONLY. NOT FOR USE IN DIAGNOSTIC OR THERAPEUTIC PROCEDURES'.