

# RPL39 Antibody

Purified Rabbit Polyclonal Antibody (Pab)

Catalog # AP50753

## Product Information

---

<b>Application</b>	WB
<b>Primary Accession</b>	<a href="#">P62891</a>
<b>Reactivity</b>	Human, Mouse, Rat
<b>Host</b>	Rabbit
<b>Clonality</b>	polyclonal
<b>Calculated MW</b>	6407

## Additional Information

---

<b>Gene ID</b>	6170
<b>Other Names</b>	60S ribosomal protein L39, RPL39
<b>Dilution</b>	WB~~1:1000
<b>Format</b>	Rabbit IgG in phosphate buffered saline (without Mg <sup>2+</sup> and Ca <sup>2+</sup> ), pH 7.4, 150mM NaCl, 0.09% (W/V) sodium azide and 50% glycerol.
<b>Storage Conditions</b>	-20°C

## Protein Information

---

<b>Name</b>	RPL39
<b>Function</b>	RNA-binding component of the large ribosomal subunit. The ribosome is a large ribonucleoprotein complex responsible for the synthesis of proteins in the cell.
<b>Cellular Location</b>	Cytoplasm.

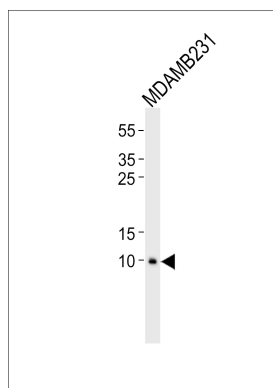
## References

---

Tsui S.K.W.,et al.Biochem. Mol. Biol. Int. 40:611-616(1996).  
Otsuka S.,et al.Biochim. Biophys. Acta 1308:119-121(1996).  
Yoshihama M.,et al.Genome Res. 12:379-390(2002).  
Uechi T.,et al.Genomics 72:223-230(2001).  
Anger A.M.,et al.Nature 497:80-85(2013).

## Images

---



Western blot analysis of lysate from MDAMB231 cell line, using RPL39 Antibody (AP50753). AP50753 was diluted at 1:1000. A goat anti-rabbit IgG H&L (HRP) at 1:5000 dilution was used as the secondary antibody. Lysate at 35 µg.

Please note: All products are 'FOR RESEARCH USE ONLY. NOT FOR USE IN DIAGNOSTIC OR THERAPEUTIC PROCEDURES'.