

# PSMD2 Antibody

Purified Rabbit Polyclonal Antibody (Pab)

Catalog # AP50754

## Product Information

---

<b>Application</b>	WB
<b>Primary Accession</b>	<a href="#">Q13200</a>
<b>Reactivity</b>	Human, Mouse, Rat
<b>Host</b>	Rabbit
<b>Clonality</b>	polyclonal
<b>Calculated MW</b>	100200

## Additional Information

---

<b>Gene ID</b>	5708
<b>Other Names</b>	26S proteasome non-ATPase regulatory subunit 2, 26S proteasome regulatory subunit RPN1, 26S proteasome regulatory subunit S2, 26S proteasome subunit p97, Protein 5511, Tumor necrosis factor type 1 receptor-associated protein 2, PSMD2, TRAP2
<b>Dilution</b>	WB~~1:1000
<b>Format</b>	Rabbit IgG in phosphate buffered saline (without Mg <sup>2+</sup> and Ca <sup>2+</sup> ), pH 7.4, 150mM NaCl, 0.09% (W/V) sodium azide and 50% glycerol.
<b>Storage Conditions</b>	-20°C

## Protein Information

---

<b>Name</b>	PSMD2
<b>Synonyms</b>	TRAP2
<b>Function</b>	Component of the 26S proteasome, a multiprotein complex involved in the ATP-dependent degradation of ubiquitinated proteins. This complex plays a key role in the maintenance of protein homeostasis by removing misfolded or damaged proteins, which could impair cellular functions, and by removing proteins whose functions are no longer required. Therefore, the proteasome participates in numerous cellular processes, including cell cycle progression, apoptosis, or DNA damage repair.
<b>Tissue Location</b>	Found in skeletal muscle, liver, heart, brain, kidney, pancreas, lung and placenta

## Background

---

Acts as a regulatory subunit of the 26 proteasome which is involved in the ATP-dependent degradation of ubiquitinated proteins.

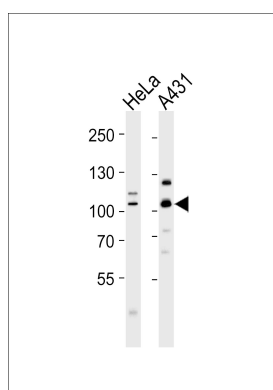
## References

---

Tsurumi C.,et al.Eur. J. Biochem. 239:912-921(1996).  
Kalnine N.,et al.Submitted (AUG-2003) to the EMBL/GenBank/DDBJ databases.  
Dunbar J.D.,et al.J. Immunol. 158:4252-4259(1997).  
Boldin M.P.,et al.FEBS Lett. 367:39-44(1995).  
Olsen J.V.,et al.Cell 127:635-648(2006).

## Images

---



Western blot analysis of lysates from HeLa,A431 cell line (from left to right),using PSMD2 Antibody(AP50754). AP50754 was diluted at 1:1000 at each lane. A goat anti-rabbit IgG H&L(HRP) at 1:5000 dilution was used as the secondary antibody.Lysates at 35ug per lane.

Please note: All products are 'FOR RESEARCH USE ONLY. NOT FOR USE IN DIAGNOSTIC OR THERAPEUTIC PROCEDURES'.