

CDCA2 Antibody

Purified Rabbit Polyclonal Antibody (Pab)

Catalog # AP50761

Product Information

Application	WB
Primary Accession	Q69YH5
Reactivity	Human
Host	Rabbit
Clonality	polyclonal
Calculated MW	112676

Additional Information

Gene ID	157313
Other Names	Cell division cycle-associated protein 2, Recruits PP1 onto mitotic chromatin at anaphase protein, Repo-Man, CDCA2
Dilution	WB~~ 1:1000
Format	Rabbit IgG in phosphate buffered saline (without Mg ²⁺ and Ca ²⁺), pH 7.4, 150mM NaCl, 0.09% (W/V) sodium azide and 50% glycerol.
Storage Conditions	-20°C

Protein Information

Name	CDCA2
Function	Regulator of chromosome structure during mitosis required for condensin-depleted chromosomes to retain their compact architecture through anaphase. Acts by mediating the recruitment of phosphatase PP1-gamma subunit (PPP1CC) to chromatin at anaphase and into the following interphase. At anaphase onset, its association with chromatin targets a pool of PPP1CC to dephosphorylate substrates.
Cellular Location	Nucleus. Note=Excluded from the nucleolus. Present in nucleoplasm throughout the G1, S and G2 stages of the cell cycle. During M phase, it becomes diffuse throughout the cell as the nuclear membrane breaks down, and faintly accumulates later on metaphase chromatin. As the cell progresses to anaphase, it accumulates on chromatin
Tissue Location	Ubiquitously expressed.

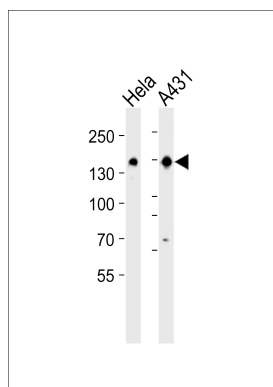
Background

Regulator of chromosome structure during mitosis required for condensin-depleted chromosomes to retain their compact architecture through anaphase. Acts by mediating the recruitment of phosphatase PP1-gamma subunit (PPP1CC) to chromatin at anaphase and into the following interphase. At anaphase onset, its association with chromatin targets a pool of PPP1CC to dephosphorylate substrates.

References

Bechtel S.,et al.BMC Genomics 8:399-399(2007).
Nusbaum C.,et al.Nature 439:331-335(2006).
Walker M.G.,et al.Curr. Cancer Drug Targets 1:73-83(2001).
Ota T.,et al.Nat. Genet. 36:40-45(2004).
Olsen J.V.,et al.Cell 127:635-648(2006).

Images



Western blot analysis of lysates from HeLa,A431 cell line (from left to right),using CDCA2 Antibody(AP50761). AP50761 was diluted at 1:1000 at each lane. A goat anti-rabbit IgG H&L(HRP) at 1:5000 dilution was used as the secondary antibody.Lysates at 35ug per lane.

Please note: All products are 'FOR RESEARCH USE ONLY. NOT FOR USE IN DIAGNOSTIC OR THERAPEUTIC PROCEDURES'.