

MBTPS1 Antibody

Purified Rabbit Polyclonal Antibody (Pab)

Catalog # AP50769

Product Information

Application	WB
Primary Accession	Q14703
Reactivity	Human, Mouse, Rat
Host	Rabbit
Clonality	polyclonal
Calculated MW	117749

Additional Information

Gene ID	8720
Other Names	Membrane-bound transcription factor site-1 protease, Endopeptidase S1P, Subtilisin/kexin-isozyme 1, SKI-1, MBTPS1, KIAA0091, S1P, SKI1
Dilution	WB~~ 1:1000
Format	Rabbit IgG in phosphate buffered saline (without Mg2+ and Ca2+), pH 7.4, 150mM NaCl, 0.09% (W/V) sodium azide and 50% glycerol.
Storage Conditions	-20°C

Protein Information

Name	MBTPS1 (HGNC:15456)
Function	<p>Serine protease that cleaves after hydrophobic or small residues, provided that Arg or Lys is in position P4: known substrates include SREBF1/SREBP1, SREBF2/SREBP2, BDNF, GNPTAB, ATF6, ATF6B and FAM20C (PubMed:10644685, PubMed:12782636, PubMed:21719679, PubMed:34349020). Cleaves substrates after Arg-Ser-Val-Leu (SREBP2), Arg-His-Leu-Leu (ATF6), Arg-Gly-Leu-Thr (BDNF) and its own propeptide after Arg-Arg-Leu-Leu (PubMed:10644685, PubMed:21719679). Catalyzes the first step in the proteolytic activation of the sterol regulatory element-binding proteins (SREBPs) SREBF1/SREBP1 and SREBF2/SREBP2 (PubMed:12782636). Also mediates the first step in the proteolytic activation of the cyclic AMP-dependent transcription factor ATF-6 (ATF6 and ATF6B) (PubMed:12782636). Mediates the protein cleavage of GNPTAB into subunit alpha and beta, thereby participating in biogenesis of lysosomes (PubMed:21719679). Cleaves the propeptide from FAM20C which is required for FAM20C secretion from the Golgi apparatus membrane and for enhancement of FAM20C kinase activity, promoting osteoblast differentiation and biomineralization (PubMed:34349020). Involved in the regulation of</p>

M6P-dependent Golgi-to-lysosome trafficking of lysosomal enzymes (PubMed:[21719679](#), PubMed:[30046013](#)). It is required for the activation of CREB3L2/BBF2H7, a transcriptional activator of MIA3/TANGO and other genes controlling mega vesicle formation (PubMed:[30046013](#)). Therefore, it plays a key role in the regulation of mega vesicle-mediated collagen trafficking (PubMed:[30046013](#)). In astrocytes and osteoblasts, upon DNA damage and ER stress, mediates the first step of the regulated intramembrane proteolytic activation of the transcription factor CREB3L1, leading to the inhibition of cell-cycle progression (PubMed:[16417584](#)).

Cellular Location

Endoplasmic reticulum membrane; Single-pass type I membrane protein. Golgi apparatus membrane; Single-pass type I membrane protein. Note=May sort to other organelles, including lysosomal and/or endosomal compartments

Tissue Location

Widely expressed..

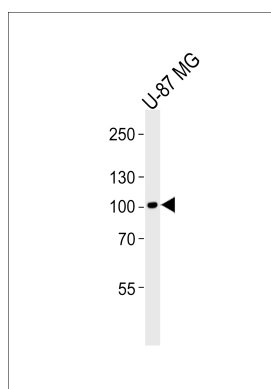
Background

Catalyzes the first step in the proteolytic activation of the sterol regulatory element-binding proteins (SREBPs). Other known substrates are BDNF and ATF6. Cleaves after hydrophobic or small residues, provided that Arg or Lys is in position P4. Cleaves known substrates after Arg-Ser-Val-Leu (SERBP-2), Arg-His-Leu-Leu (ATF6), Arg-Gly-Leu-Thr (BDNF) and its own propeptide after Arg-Arg-Leu-Leu.

References

- Nakajima T.,et al.J. Hum. Genet. 45:212-217(2000).
Nagase T.,et al.DNA Res. 2:37-43(1995).
Bechtel S.,et al.BMC Genomics 8:399-399(2007).
Toure B.B.,et al.J. Biol. Chem. 275:2349-2358(2000).
Seidah N.G.,et al.Proc. Natl. Acad. Sci. U.S.A. 96:1321-1326(1999).

Images



Western blot analysis of lysate from U-87 MG cell line, using MBTPS1 Antibody (AP50769). AP50769 was diluted at 1:1000. A goat anti-rabbit IgG H&L (HRP) at 1:5000 dilution was used as the secondary antibody. Lysate at 35ug.

Please note: All products are 'FOR RESEARCH USE ONLY. NOT FOR USE IN DIAGNOSTIC OR THERAPEUTIC PROCEDURES'.