

NOLC1 Antibody

Purified Rabbit Polyclonal Antibody (Pab)

Catalog # AP50770

Product Information

Application	WB
Primary Accession	Q14978
Reactivity	Human, Mouse, Rat
Host	Rabbit
Clonality	polyclonal
Calculated MW	73603

Additional Information

Gene ID	9221
Other Names	Nucleolar and coiled-body phosphoprotein 1, 140 kDa nucleolar phosphoprotein, Nopp140, Hepatitis C virus NS5A-transactivated protein 13, HCV NS5A-transactivated protein 13, Nucleolar 130 kDa protein, Nucleolar phosphoprotein p130, NOLC1, KIAA0035, NS5ATP13
Dilution	WB~~ 1:1000
Format	Rabbit IgG in phosphate buffered saline (without Mg ²⁺ and Ca ²⁺), pH 7.4, 150mM NaCl, 0.09% (W/V) sodium azide and 50% glycerol.
Storage Conditions	-20°C

Protein Information

Name	NOLC1 (HGNC:15608)
Function	Nucleolar protein that acts as a regulator of RNA polymerase I by connecting RNA polymerase I with enzymes responsible for ribosomal processing and modification (PubMed: 10567578 , PubMed: 26399832). Required for neural crest specification: following monoubiquitination by the BCR(KBTBD8) complex, associates with TCOF1 and acts as a platform to connect RNA polymerase I with enzymes responsible for ribosomal processing and modification, leading to remodel the translational program of differentiating cells in favor of neural crest specification (PubMed: 26399832). Involved in nucleologenesis, possibly by playing a role in the maintenance of the fundamental structure of the fibrillar center and dense fibrillar component in the nucleolus (PubMed: 9016786). It has intrinsic GTPase and ATPase activities (PubMed: 9016786).
Cellular Location	Nucleus, nucleolus. Cytoplasm. Note=Shuttles between the nucleolus and the cytoplasm. At telophase it begins to assemble into granular-like pre-nucleolar

bodies which are subsequently relocated to nucleoli at the early G1-phase.

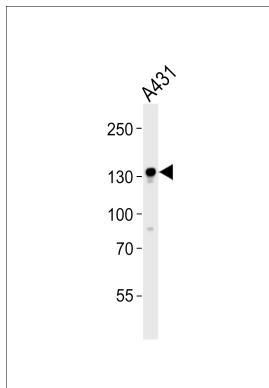
Background

Related to nucleologenesis, may play a role in the maintenance of the fundamental structure of the fibrillar center and dense fibrillar component in the nucleolus. It has intrinsic GTPase and ATPase activities. May play an important role in transcription catalyzed by RNA polymerase I.

References

Pai C.-Y.,et al.J. Cell Sci. 108:1911-1920(1995).
Ying Z.L.,et al.Submitted (NOV-2004) to the EMBL/GenBank/DDBJ databases.
Deloukas P.,et al.Nature 429:375-381(2004).
Mural R.J.,et al.Submitted (SEP-2005) to the EMBL/GenBank/DDBJ databases.
Nomura N.,et al.DNA Res. 1:27-35(1994).

Images



Western blot analysis of lysate from A431 cell line,using NOLC1 Antibody(AP50770). AP50770 was diluted at 1:1000. A goat anti-rabbit IgG H&L(HRP) at 1:5000 dilution was used as the secondary antibody.Lysate at 35ug.

Please note: All products are 'FOR RESEARCH USE ONLY. NOT FOR USE IN DIAGNOSTIC OR THERAPEUTIC PROCEDURES'.