

ACTBL2 Antibody

Purified Rabbit Polyclonal Antibody (Pab)

Catalog # AP50774

Product Information

Application	WB
Primary Accession	Q562R1
Reactivity	Human, Mouse
Host	Rabbit
Clonality	polyclonal
Calculated MW	42003

Additional Information

Gene ID	345651
Other Names	Beta-actin-like protein 2, Kappa-actin, ACTBL2
Dilution	WB~~ 1:1000
Format	Rabbit IgG in phosphate buffered saline (without Mg ²⁺ and Ca ²⁺), pH 7.4, 150mM NaCl, 0.09% (W/V) sodium azide and 50% glycerol.
Storage Conditions	-20°C

Protein Information

Name	ACTBL2
Function	Actins are highly conserved proteins that are involved in various types of cell motility and are ubiquitously expressed in all eukaryotic cells.
Cellular Location	Cytoplasm, cytoskeleton.

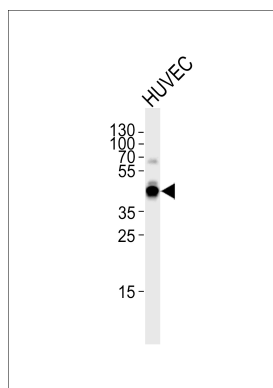
Background

Actins are highly conserved proteins that are involved in various types of cell motility and are ubiquitously expressed in all eukaryotic cells (By similarity).

References

Bechtel S.,et al.BMC Genomics 8:399-399(2007).
Mural R.J.,et al.Submitted (JUL-2005) to the EMBL/GenBank/DDBJ databases.
Chang K.-W.,et al.Hepatol. Res. 36:33-39(2006).

Images



Western blot analysis of lysate from HUVEC cell line,using ACTBL2 Antibody(AP50774). AP50774 was diluted at 1:1000. A goat anti-rabbit IgG H&L(HRP) at 1:5000 dilution was used as the secondary antibody.Lysate at 35ug.

Please note: All products are 'FOR RESEARCH USE ONLY. NOT FOR USE IN DIAGNOSTIC OR THERAPEUTIC PROCEDURES'.