

ZIC1/2/3 Antibody

Purified Rabbit Polyclonal Antibody (Pab)

Catalog # AP50776

Product Information

Application	WB, IHC
Primary Accession	Q15915
Other Accession	Q95409 , Q60481
Reactivity	Human, Mouse
Host	Rabbit
Clonality	polyclonal
Calculated MW	48309

Additional Information

Gene ID	7545
Other Names	Zinc finger protein ZIC 1, Zinc finger protein 201, Zinc finger protein of the cerebellum 1, ZIC1, ZIC, ZNF201
Dilution	WB~~ 1:1000 IHC~~1:50-100
Format	Rabbit IgG in phosphate buffered saline (without Mg ²⁺ and Ca ²⁺), pH 7.4, 150mM NaCl, 0.09% (W/V) sodium azide and 50% glycerol.
Storage Conditions	-20°C

Protein Information

Name	ZIC1
Synonyms	ZIC, ZNF201
Function	Acts as a transcriptional activator. Involved in neurogenesis. Plays important roles in the early stage of organogenesis of the CNS, as well as during dorsal spinal cord development and maturation of the cerebellum. Involved in the spatial distribution of mossy fiber (MF) neurons within the pontine gray nucleus (PGN). Plays a role in the regulation of MF axon pathway choice. Promotes MF migration towards ipsilaterally-located cerebellar territories. May have a role in shear flow mechanotransduction in osteocytes. Retains nuclear GLI1 and GLI3 in the cytoplasm. Binds to the minimal GLI-consensus sequence 5'-TGGGTGGTC-3' (By similarity).
Cellular Location	Nucleus. Cytoplasm. Note=Localizes in the cytoplasm in presence of MDFIC overexpression. CNS. A high level expression is seen in the cerebellum. Detected in the nuclei

Tissue Location

of the cerebellar granule cell lineage from the progenitor cells of the external germinal layer to the postmigrated cells of the internal granular layer. Detected in medulloblastoma (26/29 cases), but not present in all other tumors examined.

Background

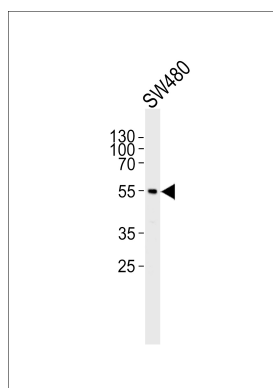
Acts as a transcriptional activator. Involved in neurogenesis. Plays important roles in the early stage of organogenesis of the CNS, as well as during dorsal spinal cord development and maturation of the cerebellum. Involved in the spatial distribution of mossy fiber (MF) neurons within the pontine gray nucleus (PGN). Plays a role in the regulation of MF axon pathway choice. Promotes MF migration towards ipsilaterally- located cerebellar territories. May have a role in shear flow mechanotransduction in osteocytes. Retains nuclear GLI1 and GLI3 in the cytoplasm. Binds to the minimal GLI-consensus sequence 5'-TGGGTGGTC-3' (By similarity).

References

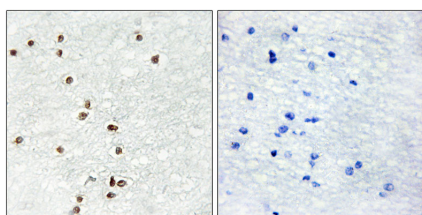
Yokota N.,et al.Cancer Res. 56:377-383(1996).

Mural R.J.,et al.Submitted (SEP-2005) to the EMBL/GenBank/DDBJ databases.

Images



Western blot analysis of lysate from SW480 cell line, using ZIC1/2/3 Antibody(AP50776). AP50776 was diluted at 1:1000. A goat anti-rabbit IgG H&L(HRP) at 1:5000 dilution was used as the secondary antibody. Lysate at 35ug.



Immunohistochemistry analysis of paraffin-embedded human brain tissue using ZIC1/2/3 antibody.

Please note: All products are 'FOR RESEARCH USE ONLY. NOT FOR USE IN DIAGNOSTIC OR THERAPEUTIC PROCEDURES'.