

TOMM20 Antibody

Purified Rabbit Polyclonal Antibody (Pab)

Catalog # AP50780

Product Information

Application	WB
Primary Accession	Q15388
Reactivity	Human, Mouse
Host	Rabbit
Clonality	polyclonal
Calculated MW	16298

Additional Information

Gene ID	9804
Other Names	Mitochondrial import receptor subunit TOM20 homolog, Mitochondrial 20 kDa outer membrane protein, Outer mitochondrial membrane receptor Tom20, TOMM20, KIAA0016
Dilution	WB~~ 1:1000
Format	Rabbit IgG in phosphate buffered saline (without Mg ²⁺ and Ca ²⁺), pH 7.4, 150mM NaCl, 0.09% (W/V) sodium azide and 50% glycerol.
Storage Conditions	-20°C

Protein Information

Name	TOMM20
Synonyms	KIAA0016
Function	Central component of the receptor complex responsible for the recognition and translocation of cytosolically synthesized mitochondrial preproteins. Together with TOM22 functions as the transit peptide receptor at the surface of the mitochondrion outer membrane and facilitates the movement of preproteins into the TOM40 translocation pore (By similarity). Required for the translocation across the mitochondrial outer membrane of cytochrome P450 monooxygenases.
Cellular Location	Mitochondrion outer membrane; Single-pass membrane protein

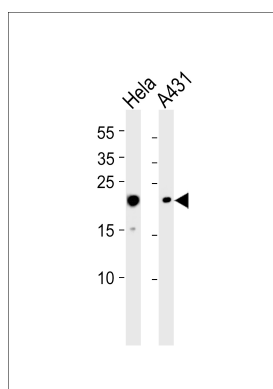
Background

Central component of the receptor complex responsible for the recognition and translocation of cytosolically synthesized mitochondrial preproteins. Together with TOM22 functions as the transit peptide receptor at the surface of the mitochondrion outer membrane and facilitates the movement of preproteins into the TOM40 translocation pore (By similarity).

References

Goping I.S.,et al.FEBS Lett. 373:45-50(1995).
Seki N.,et al.FEBS Lett. 375:307-310(1995).
Hernandez J.M.,et al.Gene 239:283-291(1999).
Nomura N.,et al.DNA Res. 1:27-35(1994).
Ota T.,et al.Nat. Genet. 36:40-45(2004).

Images



Western blot analysis of lysates from HeLa, A431 cell line (from left to right), using TOMM20 Antibody (AP50780). AP50780 was diluted at 1:1000 at each lane. A goat anti-rabbit IgG H&L (HRP) at 1:5000 dilution was used as the secondary antibody. Lysates at 35 µg per lane.

Please note: All products are 'FOR RESEARCH USE ONLY. NOT FOR USE IN DIAGNOSTIC OR THERAPEUTIC PROCEDURES'.