

# CBLN3 Antibody

Purified Rabbit Polyclonal Antibody (Pab)

Catalog # AP50784

## Product Information

---

<b>Application</b>	WB, IHC
<b>Primary Accession</b>	<a href="#">Q6UW01</a>
<b>Reactivity</b>	Human, Mouse
<b>Host</b>	Rabbit
<b>Clonality</b>	polyclonal
<b>Calculated MW</b>	21521

## Additional Information

---

<b>Gene ID</b>	643866
<b>Other Names</b>	Cerebellin-3, CBLN3
<b>Dilution</b>	WB~~ 1:1000 IHC~~1:50-100
<b>Format</b>	Rabbit IgG in phosphate buffered saline (without Mg <sup>2+</sup> and Ca <sup>2+</sup> ), pH 7.4, 150mM NaCl, 0.09% (W/V) sodium azide and 50% glycerol.
<b>Storage Conditions</b>	-20°C

## Protein Information

---

<b>Name</b>	CBLN3
<b>Function</b>	May be involved in synaptic functions in the CNS.
<b>Cellular Location</b>	Endoplasmic reticulum. Golgi apparatus, cis-Golgi network. Secreted Synapse. Note=In the absence of CBLN1, remains in the endoplasmic reticulum/cis-Golgi apparatus. Partial secretion depends on an association with CBLN1 and maybe CBLN4, but not on CBLN2 (By similarity).

## Background

---

May be involved in synaptic functions in the CNS (By similarity).

## References

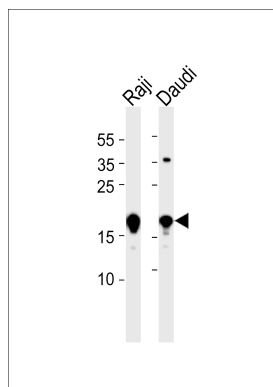
---

Clark H.F.,et al.Genome Res. 13:2265-2270(2003).  
Zhang Z.,et al.Protein Sci. 13:2819-2824(2004).

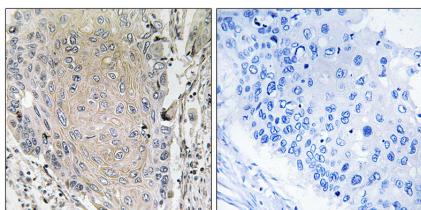


## Images

---



Western blot analysis of lysates from Raji, Daudi cell line (from left to right), using CBLN3 Antibody (AP50784). AP50784 was diluted at 1:1000 at each lane. A goat anti-rabbit IgG H&L (HRP) at 1:5000 dilution was used as the secondary antibody. Lysates at 35 µg per lane.



Immunohistochemistry analysis of paraffin-embedded human lung carcinoma tissue using CBLN3 antibody.

Please note: All products are 'FOR RESEARCH USE ONLY. NOT FOR USE IN DIAGNOSTIC OR THERAPEUTIC PROCEDURES'.