

Tubulin α Antibody

Purified Rabbit Polyclonal Antibody (Pab)

Catalog # AP50786

Product Information

Application	WB, IF, IHC
Primary Accession	Q71U36
Other Accession	P68363
Reactivity	Human, Mouse, Rat
Host	Rabbit
Clonality	polyclonal
Calculated MW	50136

Additional Information

Gene ID	7846
Other Names	Tubulin alpha-1A chain, Alpha-tubulin 3, Tubulin B-alpha-1, Tubulin alpha-3 chain, TUBA1A, TUBA3
Dilution	WB~~ 1:1000 IF~~1:100 IHC~~1:50~100
Format	Rabbit IgG in phosphate buffered saline (without Mg ²⁺ and Ca ²⁺), pH 7.4, 150mM NaCl, 0.09% (W/V) sodium azide and 50% glycerol.
Storage Conditions	-20°C

Protein Information

Name	TUBA1A
Synonyms	TUBA3
Function	Tubulin is the major constituent of microtubules, a cylinder consisting of laterally associated linear protofilaments composed of alpha- and beta-tubulin heterodimers. Microtubules grow by the addition of GTP-tubulin dimers to the microtubule end, where a stabilizing cap forms. Below the cap, tubulin dimers are in GDP-bound state, owing to GTPase activity of alpha-tubulin.
Cellular Location	Cytoplasm, cytoskeleton. Cytoplasm, cytoskeleton, flagellum axoneme {ECO:0000250 UniProtKB:P68369}
Tissue Location	Expressed at a high level in fetal brain.

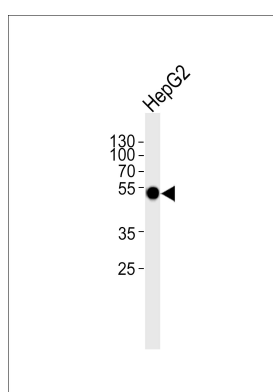
Background

Tubulin is the major constituent of microtubules. It binds two moles of GTP, one at an exchangeable site on the beta chain and one at a non-exchangeable site on the alpha chain.

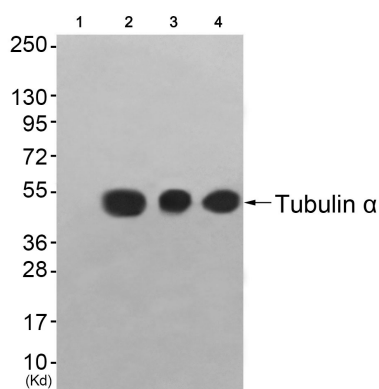
References

Hall J.L.,et al.Nucleic Acids Res. 13:207-223(1985).
Crabtree D.V.,et al.Bioorg. Med. Chem. 9:1967-1976(2001).
Ota T.,et al.Nat. Genet. 36:40-45(2004).
Scherer S.E.,et al.Nature 440:346-351(2006).
Mural R.J.,et al.Submitted (JUL-2005) to the EMBL/GenBank/DDBJ databases.

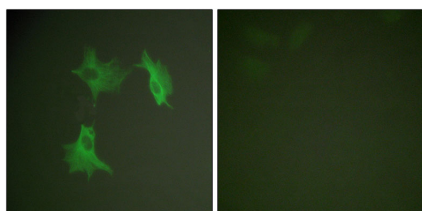
Images



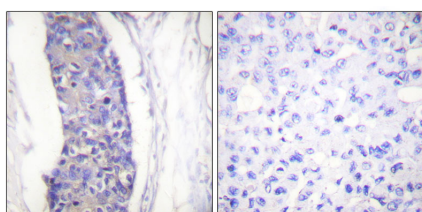
Western blot analysis of lysate from HepG2 cell line, using Tubulin α Antibody(AP50786). AP50786 was diluted at 1:1000. A goat anti-rabbit IgG H&L(HRP) at 1:5000 dilution was used as the secondary antibody. Lysate at 35ug.



Western blot analysis of extracts from 3T3 cells (Lane 2), colo cells (Lane 3) and HuvEc cells (Lane 4), using Tubulin α Antibody. The lane on the left is treated with synthesized peptide



Immunofluorescence analysis of NIH/3T3 cells, using Tubulin α antibody.



Immunohistochemistry analysis of paraffin-embedded human breast carcinoma tissue using Tubulin α antibody.

Please note: All products are 'FOR RESEARCH USE ONLY. NOT FOR USE IN DIAGNOSTIC OR THERAPEUTIC PROCEDURES'.