

THOC4 Antibody

Purified Rabbit Polyclonal Antibody (Pab)
Catalog # AP50789

Product Information

Application	WB
Primary Accession	Q86V81
Reactivity	Human, Mouse, Rat
Host	Rabbit
Clonality	polyclonal
Calculated MW	27 kDa

Additional Information

Other Names	THO complex subunit 4, Tho4, Ally of AML-1 and LEF-1, Aly/REF export factor, Transcriptional coactivator Aly/REF, bZIP-enhancing factor BEF, ALYREF, ALY, BEF, THOC4
Dilution	WB~~ 1:1000
Format	Rabbit IgG in phosphate buffered saline (without Mg ²⁺ and Ca ²⁺), pH 7.4, 150mM NaCl, 0.09% (W/V) sodium azide and 50% glycerol.
Storage Conditions	-20°C

Protein Information

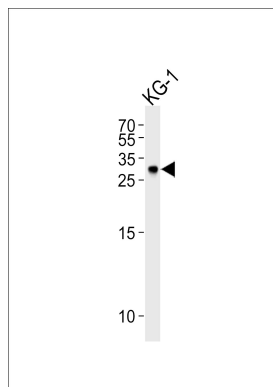
Background

Export adapter involved in nuclear export of spliced and unspliced mRNA. Binds mRNA which is thought to be transferred to the NXF1-NXT1 heterodimer for export (TAP/NFX1 pathway). Component of the TREX complex which is thought to couple mRNA transcription, processing and nuclear export, and specifically associates with spliced mRNA and not with unspliced pre-mRNA. TREX is recruited to spliced mRNAs by a transcription-independent mechanism, binds to mRNA upstream of the exon-junction complex (EJC) and is recruited in a splicing- and cap-dependent manner to a region near the 5' end of the mRNA where it functions in mRNA export to the cytoplasm. TREX recruitment occurs via an interaction between ALYREF/THOC4 and the cap-binding protein NCBP1. The TREX complex is essential for the export of Kaposi's sarcoma-associated herpesvirus (KSHV) intronless mRNAs and infectious virus production; ALYREF/THOC4 mediates the recruitment of the TREX complex to the intronless viral mRNA. Required for TREX complex assembly and for linking DDX39B to the cap-binding complex (CBC). In conjunction with THOC5 functions in NXF1-NXT1 mediated nuclear export of HSP70 mRNA; both proteins enhance the RNA binding activity of NXF1 and are required for NXF1 localization to the nuclear rim. Involved in the nuclear export of intronless mRNA; proposed to be recruited to intronless mRNA by ATP-bound DDX39B. Involved in transcription elongation and genome stability.

References

Zody M.C.,et al.Nature 440:1045-1049(2006).
Quadroni M.,et al.Submitted (OCT-2004) to UniProtKB.
Bienvenut W.V.,et al.Submitted (DEC-2008) to UniProtKB.
Wichmann I.,et al.Hum. Immunol. 60:57-62(1999).
Rappsilber J.,et al.Genome Res. 12:1231-1245(2002).

Images



Western blot analysis of lysate from KG-1 cell line,using THOC4 Antibody(AP50789). AP50789 was diluted at 1:1000. A goat anti-rabbit IgG H&L(HRP) at 1:5000 dilution was used as the secondary antibody.Lysate at 35ug.

Please note: All products are 'FOR RESEARCH USE ONLY. NOT FOR USE IN DIAGNOSTIC OR THERAPEUTIC PROCEDURES'.