

ADCK1 Antibody

Purified Rabbit Polyclonal Antibody (Pab)

Catalog # AP50794

Product Information

Application	WB
Primary Accession	Q86TW2
Reactivity	Human, Mouse
Host	Rabbit
Clonality	polyclonal
Calculated MW	60577

Additional Information

Gene ID	57143
Other Names	Uncharacterized aarF domain-containing protein kinase 1, 2711-, ADCK1
Dilution	WB~~ 1:1000
Format	Rabbit IgG in phosphate buffered saline (without Mg ²⁺ and Ca ²⁺), pH 7.4, 150mM NaCl, 0.09% (W/V) sodium azide and 50% glycerol.
Storage Conditions	-20°C

Protein Information

Name	ADCK1 {ECO:0000303 PubMed:31125351}
Function	Appears to be essential for maintaining mitochondrial cristae formation and mitochondrial function by acting via YME1L1 in a kinase- independent manner to regulate essential mitochondrial structural proteins OPA1 and IMMT (PubMed: 31125351). The action of this enzyme is not yet clear (Probable). It is not known if it has protein kinase activity and what type of substrate it would phosphorylate (Ser, Thr or Tyr) (Probable).
Cellular Location	Mitochondrion.

Background

The function of this protein is not yet clear. It is not known if it has protein kinase activity and what type of substrate it would phosphorylate (Ser, Thr or Tyr).

References

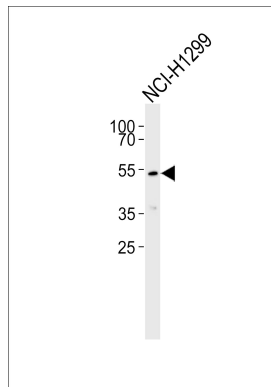
Ota T.,et al.Nat. Genet. 36:40-45(2004).

Heilig R.,et al.Nature 421:601-607(2003).

Mural R.J.,et al.Submitted (JUL-2005) to the EMBL/GenBank/DDBJ databases.

Li W.B.,et al.Submitted (FEB-2003) to the EMBL/GenBank/DDBJ databases.

Images



Western blot analysis of lysate from NCI-H1299 cell line, using ADCK1 Antibody (AP50794). AP50794 was diluted at 1:1000. A goat anti-rabbit IgG H&L (HRP) at 1:5000 dilution was used as the secondary antibody. Lysate at 35ug.

Please note: All products are 'FOR RESEARCH USE ONLY. NOT FOR USE IN DIAGNOSTIC OR THERAPEUTIC PROCEDURES'.