

TEKT4 Antibody (Center)

Affinity Purified Rabbit Polyclonal Antibody (Pab)
Catalog # AP5081c

Product Information

Application	WB, E
Primary Accession	Q8WW24
Reactivity	Human, Mouse
Host	Rabbit
Clonality	Polyclonal
Isotype	Rabbit IgG
Clone Names	RB26000
Antigen Region	132-161

Additional Information

Other Names	Tektin-4, TEKT4
Target/Specificity	This TEKT4 antibody is generated from rabbits immunized with a KLH conjugated synthetic peptide between 132-161 amino acids from the Central region of human TEKT4.
Dilution	WB~~1:1000 E~~Use at an assay dependent concentration.
Format	Purified polyclonal antibody supplied in PBS with 0.09% (W/V) sodium azide. This antibody is purified through a protein A column, followed by peptide affinity purification.
Storage	Maintain refrigerated at 2-8°C for up to 2 weeks. For long term storage store at -20°C in small aliquots to prevent freeze-thaw cycles.
Precautions	TEKT4 Antibody (Center) is for research use only and not for use in diagnostic or therapeutic procedures.

Protein Information

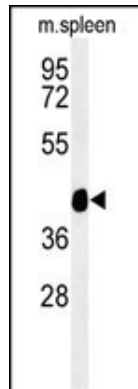
Background

TEKT4 is structural component of ciliary and flagellar microtubules. TEKT4 forms filamentous polymers in the walls of ciliary and flagellar microtubules.

References

Hillier, L.W., et al. Nature 434(7034):724-731(2005)

Images



Western blot analysis of TEKT4 Antibody (Center) (Cat. #AP5081c) in mouse spleen tissue lysates (35ug/lane). TEKT4 (arrow) was detected using the purified Pab.

Please note: All products are 'FOR RESEARCH USE ONLY. NOT FOR USE IN DIAGNOSTIC OR THERAPEUTIC PROCEDURES'.