

PPP1R14C Antibody

Purified Rabbit Polyclonal Antibody (Pab)

Catalog # AP50823

Product Information

Application	WB
Primary Accession	Q8TAE6
Reactivity	Human, Mouse, Rat
Host	Rabbit
Clonality	polyclonal
Calculated MW	17843

Additional Information

Gene ID	81706
Other Names	Protein phosphatase 1 regulatory subunit 14C, Kinase-enhanced PP1 inhibitor, PKC-potentiated PP1 inhibitory protein, Serologically defined breast cancer antigen NY-BR-81, PPP1R14C, KEPI
Dilution	WB~~ 1:500-1:1000
Format	Rabbit IgG in phosphate buffered saline (without Mg ²⁺ and Ca ²⁺), pH 7.4, 150mM NaCl, 0.09% (W/V) sodium azide and 50% glycerol.
Storage Conditions	-20°C

Protein Information

Name	PPP1R14C
Synonyms	KEPI
Function	Inhibitor of the PP1 regulatory subunit PPP1CA.
Cellular Location	Cytoplasm. Membrane; Peripheral membrane protein
Tissue Location	Detected in breast cancer.

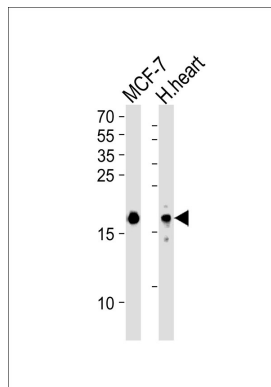
Background

Inhibitor of the PP1 regulatory subunit PPP1CA.

References

Scanlan M.J.,et al.Cancer Immun. 1:4-4(2001).
Liu Q.-R.,et al.J. Biol. Chem. 277:13312-13320(2002).
Mungall A.J.,et al.Nature 425:805-811(2003).
Erdodi F.,et al.Biochem. Biophys. Res. Commun. 306:382-387(2003).
Gauci S.,et al.Anal. Chem. 81:4493-4501(2009).

Images



Western blot analysis of lysates from MCF-7 cell line and human heart tissue lysate (from left to right), using PPP1R14C Antibody, was diluted at 1:1000 at each lane. A goat anti-rabbit IgG H&L (HRP) at 1:5000 dilution was used as the secondary antibody. Lysates at 35 µg per lane.

Please note: All products are 'FOR RESEARCH USE ONLY. NOT FOR USE IN DIAGNOSTIC OR THERAPEUTIC PROCEDURES'.