

# IARS2 Antibody

Purified Rabbit Polyclonal Antibody (Pab)

Catalog # AP50824

## Product Information

---

<b>Application</b>	WB, IF, IHC
<b>Primary Accession</b>	<a href="#">Q9NSE4</a>
<b>Reactivity</b>	Human, Mouse
<b>Host</b>	Rabbit
<b>Clonality</b>	polyclonal
<b>Calculated MW</b>	113792

## Additional Information

---

<b>Gene ID</b>	55699
<b>Other Names</b>	Isoleucine--tRNA ligase, mitochondrial, Isoleucyl-tRNA synthetase, IleRS, IARS2
<b>Dilution</b>	WB~~ 1:1000 IF~~1:100 IHC~~1:50~100
<b>Format</b>	Rabbit IgG in phosphate buffered saline (without Mg <sup>2+</sup> and Ca <sup>2+</sup> ), pH 7.4, 150mM NaCl, 0.09% (W/V) sodium azide and 50% glycerol.
<b>Storage Conditions</b>	-20°C

## Protein Information

---

<b>Name</b>	IARS2 ( <a href="#">HGNC:29685</a> )
<b>Function</b>	Aminoacyl-tRNA synthetase that catalyzes the specific attachment of isoleucine to its cognate tRNA (tRNA(Ile)).
<b>Cellular Location</b>	Mitochondrion matrix.

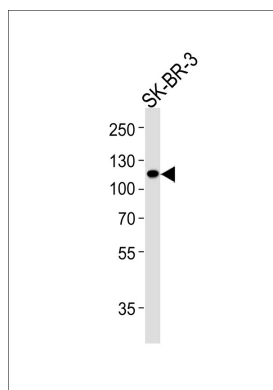
## References

---

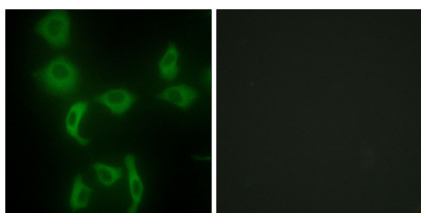
Shan Y.X.,et al.Submitted (APR-2003) to the EMBL/GenBank/DDBJ databases.  
Gregory S.G.,et al.Nature 441:315-321(2006).  
Mural R.J.,et al.Submitted (SEP-2005) to the EMBL/GenBank/DDBJ databases.  
Shiba K.,et al.Submitted (FEB-1994) to the EMBL/GenBank/DDBJ databases.  
Ota T.,et al.Nat. Genet. 36:40-45(2004).

## Images

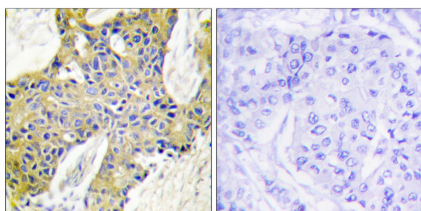
---



Western blot analysis of lysate from SK-BR-3 cell line, using IARS2 Antibody, was diluted at 1:1000. A goat anti-rabbit IgG H&L(HRP) at 1:5000 dilution was used as the secondary antibody. Lysate at 35ug.



Immunofluorescence analysis of HepG2 cells, using IARS2 antibody.



Immunohistochemistry analysis of paraffin-embedded human breast carcinoma tissue using IARS2 antibody.

Please note: All products are 'FOR RESEARCH USE ONLY. NOT FOR USE IN DIAGNOSTIC OR THERAPEUTIC PROCEDURES'.