

BCAS4 Antibody

Purified Rabbit Polyclonal Antibody (Pab)

Catalog # AP50826

Product Information

Application	WB, IHC
Primary Accession	Q8TDM0
Reactivity	Human
Host	Rabbit
Clonality	polyclonal
Calculated MW	22758

Additional Information

Gene ID	55653
Other Names	Breast carcinoma-amplified sequence 4, BCAS4
Dilution	WB~~ 1:500-1:1000 IHC~~1:50~100
Format	Rabbit IgG in phosphate buffered saline (without Mg ²⁺ and Ca ²⁺), pH 7.4, 150mM NaCl, 0.09% (W/V) sodium azide and 50% glycerol.
Storage Conditions	-20°C

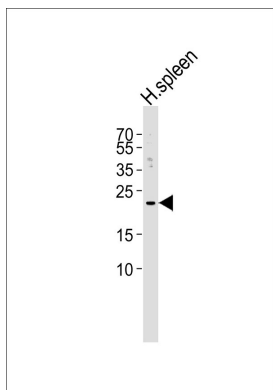
Protein Information

Name	BCAS4
Cellular Location	Cytoplasm.
Tissue Location	Brain, thymus, spleen, kidney and placenta. Overexpressed in most breast cancer cell lines

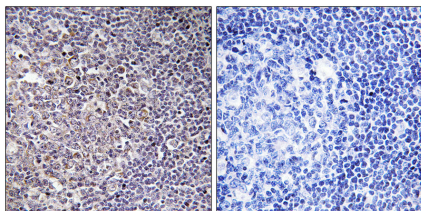
References

Baerlund M.,et al.Genes Chromosomes Cancer 35:311-317(2002).
Deloukas P.,et al.Nature 414:865-871(2001).
Ota T.,et al.Nat. Genet. 36:40-45(2004).
Bauer M.,et al.Submitted (OCT-2002) to the EMBL/GenBank/DDBJ databases.
Van Damme P.,et al.Proc. Natl. Acad. Sci. U.S.A. 109:12449-12454(2012).

Images



Western blot analysis of lysate from human spleen tissue lysate, using BCAS4 Antibody, was diluted at 1:1000. A goat anti-rabbit IgG H&L(HRP) at 1:5000 dilution was used as the secondary antibody. Lysate at 35ug.



Immunohistochemistry analysis of paraffin-embedded human tonsil tissue using BCAS4 antibody.

Please note: All products are 'FOR RESEARCH USE ONLY. NOT FOR USE IN DIAGNOSTIC OR THERAPEUTIC PROCEDURES'.