

# RSAD1 Antibody

Purified Rabbit Polyclonal Antibody (Pab)

Catalog # AP50828

## Product Information

---

Application	WB, IHC
Primary Accession	<a href="#">Q9HA92</a>
Reactivity	Human, Mouse, Rat
Host	Rabbit
Clonality	polyclonal
Calculated MW	48714

## Additional Information

---

Gene ID	55316
Other Names	Radical S-adenosyl methionine domain-containing protein 1, mitochondrial, 1399-, Oxygen-independent coproporphyrinogen-III oxidase-like protein RSAD1, RSAD1
Dilution	WB~~ 1:1000 IHC~~1:50~100
Format	Rabbit IgG in phosphate buffered saline (without Mg <sup>2+</sup> and Ca <sup>2+</sup> ), pH 7.4, 150mM NaCl, 0.09% (W/V) sodium azide and 50% glycerol.
Storage Conditions	-20°C

## Protein Information

---

Name	RSAD1
Function	May be a heme chaperone, appears to bind heme. Homologous bacterial proteins do not have oxygen-independent coproporphyrinogen- III oxidase activity (Probable). Binds 1 [4Fe-4S] cluster. The cluster is coordinated with 3 cysteines and an exchangeable S-adenosyl-L- methionine (By similarity).
Cellular Location	Mitochondrion.

## Background

---

May be involved in porphyrin cofactor biosynthesis (By similarity).

## References

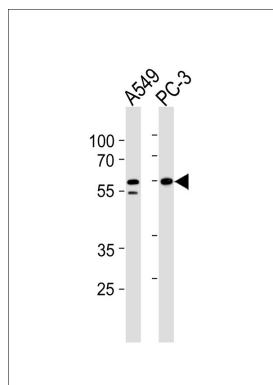
---

Ota T.,et al.Nat. Genet. 36:40-45(2004).

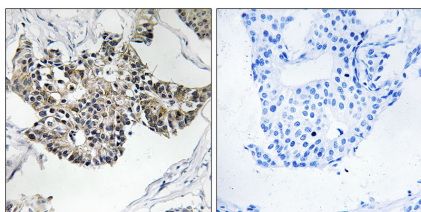
Suzuki Y.,et al.Submitted (APR-2005) to the EMBL/GenBank/DDBJ databases.

## Images

---



Western blot analysis of lysates from A549,PC-3 cell line (from left to right),using RSAD1 Antibody, was diluted at 1:1000 at each lane. A goat anti-rabbit IgG H&L(HRP) at 1:5000 dilution was used as the secondary antibody.Lysates at 35ug per lane.



Immunohistochemistry analysis of paraffin-embedded human breast carcinoma tissue, using RSAD1 antibody.

Please note: All products are 'FOR RESEARCH USE ONLY. NOT FOR USE IN DIAGNOSTIC OR THERAPEUTIC PROCEDURES'.