

# DUSP22 Antibody

Purified Rabbit Polyclonal Antibody (Pab)

Catalog # AP50831

## Product Information

Application	WB
Primary Accession	<a href="#">Q9NRW4</a>
Reactivity	Human, Mouse
Host	Rabbit
Clonality	polyclonal
Calculated MW	20910

## Additional Information

Gene ID	56940
Other Names	Dual specificity protein phosphatase 22, JNK-stimulatory phosphatase-1, JSP-1, Low molecular weight dual specificity phosphatase 2, LMW-DSP2, Mitogen-activated protein kinase phosphatase x, MAP kinase phosphatase x, MKP-x, DUSP22, JSP1, LMWDSP2, MKPX
Dilution	WB~~ 1:1000
Format	Rabbit IgG in phosphate buffered saline (without Mg <sup>2+</sup> and Ca <sup>2+</sup> ), pH 7.4, 150mM NaCl, 0.09% (W/V) sodium azide and 50% glycerol.
Storage Conditions	-20°C

## Protein Information

Name	DUSP22
Synonyms	JSP1, LMWDSP2, MKPX
Function	Dual specificity phosphatase; can dephosphorylate both phosphotyrosine and phosphoserine or phosphothreonine residues (PubMed: <a href="#">24714587</a> , PubMed: <a href="#">38225265</a> ). Activates the JNK signaling pathway (PubMed: <a href="#">11717427</a> ). Inhibits T-cell receptor signaling and T-cell mediated immune responses, acting, at least in part, by inducing degradation of E3 ubiquitin ligase UBR2 (PubMed: <a href="#">24714587</a> , PubMed: <a href="#">38225265</a> ). Dephosphorylates and thereby induces 'Lys-48'-linked ubiquitination of UBR2, leading to proteasomal degradation of UBR2 (PubMed: <a href="#">38225265</a> ). Dephosphorylates and thereby inactivates tyrosine kinase LCK (PubMed: <a href="#">24714587</a> ). Inhibits UBR2-mediated 'Lys-63'-linked ubiquitination of LCK (PubMed: <a href="#">38225265</a> ). May play a role in B-cell receptor (BCR) signaling and B-cell function (By similarity).
Cellular Location	Cytoplasm.

**Tissue Location**

Ubiquitous. Highest expression seen in heart, placenta, lung, liver, kidney and pancreas

**Background**

---

Activates the Jnk signaling pathway. Dephosphorylates and deactivates p38 and stress-activated protein kinase/c-Jun N- terminal kinase (SAPK/JNK) (By similarity).

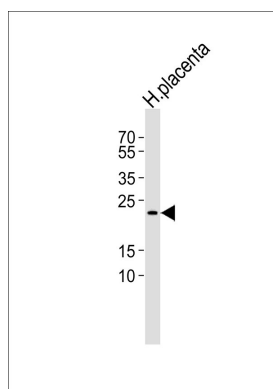
**References**

---

Shen Y.,et al.Proc. Natl. Acad. Sci. U.S.A. 98:13613-13618(2001).  
Gu J.,et al.Submitted (JUL-1999) to the EMBL/GenBank/DDBJ databases.  
Mao Y.,et al.Submitted (MAR-2003) to the EMBL/GenBank/DDBJ databases.  
Ota T.,et al.Nat. Genet. 36:40-45(2004).  
Mungall A.J.,et al.Nature 425:805-811(2003).

**Images**

---



Western blot analysis of lysate from human placenta tissue lysate,using DUSP22 Antibody, was diluted at 1:1000. A goat anti-rabbit IgG H&L(HRP) at 1:5000 dilution was used as the secondary antibody.Lysate at 35ug.

Please note: All products are 'FOR RESEARCH USE ONLY. NOT FOR USE IN DIAGNOSTIC OR THERAPEUTIC PROCEDURES'.