

CEP76 Antibody

Purified Rabbit Polyclonal Antibody (Pab)
Catalog # AP50832

Product Information

| | |
|--------------------------|------------------------|
| Application | WB |
| Primary Accession | Q8TAP6 |
| Reactivity | Human, Mouse, Rat |
| Host | Rabbit |
| Clonality | polyclonal |
| Calculated MW | 74413 |

Additional Information

| | |
|---------------------------|--|
| Gene ID | 79959 |
| Other Names | Centrosomal protein of 76 kDa, Cep76, CEP76, C18orf9 |
| Dilution | WB~~ 1:1000 |
| Format | Rabbit IgG in phosphate buffered saline (without Mg ²⁺ and Ca ²⁺), pH 7.4, 150mM NaCl, 0.09% (W/V) sodium azide and 50% glycerol. |
| Storage Conditions | -20°C |

Protein Information

| | |
|--------------------------|--|
| Name | CEP76 |
| Synonyms | C18orf9 |
| Function | Centrosomal protein involved in regulation of centriole duplication. Required to limit centriole duplication to once per cell cycle by preventing centriole reduplication. |
| Cellular Location | Cytoplasm, cytoskeleton, microtubule organizing center, centrosome. Cytoplasm, cytoskeleton, microtubule organizing center, centrosome, centriole Note=Does not localize along the ciliary axoneme |

Background

Centrosomal protein involved in regulation of centriole duplication. Required to limit centriole duplication to once per cell cycle by preventing centriole reduplication.

References

Ota T.,et al.Nat. Genet. 36:40-45(2004).

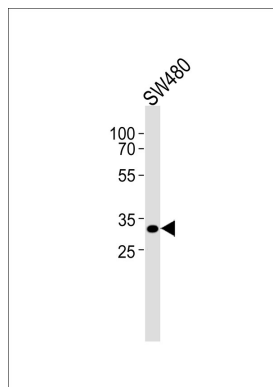
Nusbaum C.,et al.Nature 437:551-555(2005).

Mural R.J.,et al.Submitted (SEP-2005) to the EMBL/GenBank/DDBJ databases.

Bechtel S.,et al.BMC Genomics 8:399-399(2007).

Andersen J.S.,et al.Nature 426:570-574(2003).

Images



Western blot analysis of lysate from SW480 cell line,using CEP76 Antibody, was diluted at 1:1000. A goat anti-rabbit IgG H&L(HRP) at 1:5000 dilution was used as the secondary antibody.Lysate at 35ug.

Please note: All products are 'FOR RESEARCH USE ONLY. NOT FOR USE IN DIAGNOSTIC OR THERAPEUTIC PROCEDURES'.