

ES8L1 Antibody

Purified Rabbit Polyclonal Antibody (Pab)

Catalog # AP50836

Product Information

Application	WB, IHC
Primary Accession	Q8TE68
Reactivity	Human, Mouse
Host	Rabbit
Clonality	polyclonal
Calculated MW	80251

Additional Information

Gene ID	54869
Other Names	Epidermal growth factor receptor kinase substrate 8-like protein 1, EPS8-like protein 1, Epidermal growth factor receptor pathway substrate 8-related protein 1, EPS8-related protein 1, EPS8L1, DRC3, EPS8R1
Dilution	WB~~ 1:1000 IHC~~1:50~100
Format	Rabbit IgG in phosphate buffered saline (without Mg ²⁺ and Ca ²⁺), pH 7.4, 150mM NaCl, 0.09% (W/V) sodium azide and 50% glycerol.
Storage Conditions	-20°C

Protein Information

Name	EPS8L1
Synonyms	DRC3, EPS8R1
Function	Stimulates guanine exchange activity of SOS1. May play a role in membrane ruffling and remodeling of the actin cytoskeleton.
Cellular Location	Cytoplasm.
Tissue Location	Detected in placenta.

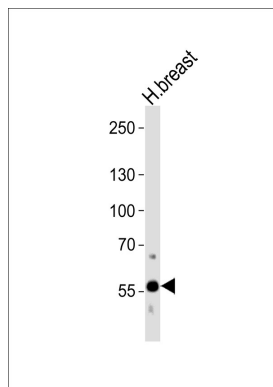
Background

Stimulates guanine exchange activity of SOS1. May play a role in membrane ruffling and remodeling of the actin cytoskeleton.

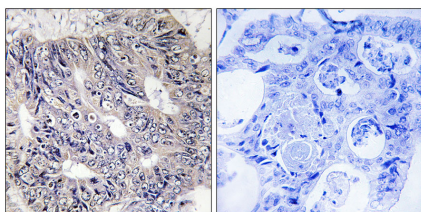
References

Wu K.,et al.Zhonghua Yi Xue Yi Chuan Xue Za Zhi 16:325-327(1999).
Tocchetti A.,et al.Genomics 81:234-244(2003).
Wan D.,et al.Proc. Natl. Acad. Sci. U.S.A. 101:15724-15729(2004).
Ota T.,et al.Nat. Genet. 36:40-45(2004).
Grimwood J.,et al.Nature 428:529-535(2004).

Images



Western blot analysis of lysate from human breast tissue lysate,using ES8L1 Antibody, was diluted at 1:1000. A goat anti-rabbit IgG H&L(HRP) at 1:5000 dilution was used as the secondary antibody.Lysate at 35ug.



Immunohistochemistry analysis of paraffin-embedded human colon carcinoma tissue using ES8L1 antibody.

Please note: All products are 'FOR RESEARCH USE ONLY. NOT FOR USE IN DIAGNOSTIC OR THERAPEUTIC PROCEDURES'.