

ARPP21 Antibody

Purified Rabbit Polyclonal Antibody (Pab)

Catalog # AP50846

Product Information

Application	WB, IHC
Primary Accession	Q9UBL0
Reactivity	Human, Mouse
Host	Rabbit
Clonality	polyclonal
Calculated MW	89196

Additional Information

Gene ID	10777
Other Names	cAMP-regulated phosphoprotein 21, ARPP-21, Thymocyte cAMP-regulated phosphoprotein, ARPP21, TARPP
Dilution	WB~~ 1:1000 IHC~~1:50~100
Format	Rabbit IgG in phosphate buffered saline (without Mg ²⁺ and Ca ²⁺), pH 7.4, 150mM NaCl, 0.09% (W/V) sodium azide and 50% glycerol.
Storage Conditions	-20°C

Protein Information

Name	ARPP21
Synonyms	TARPP
Function	Isoform 2 may act as a competitive inhibitor of calmodulin- dependent enzymes such as calcineurin in neurons.
Cellular Location	Cytoplasm.
Tissue Location	Isoform 2 is expressed in brain. Isoform 1 is present in immature thymocytes (at protein level)

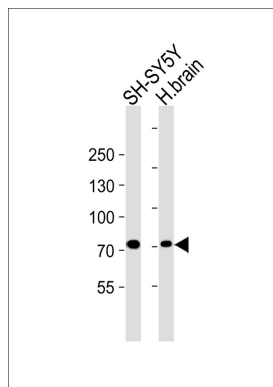
Background

Isoform 2 may act as a competitive inhibitor of calmodulin-dependent enzymes such as calcineurin in neurons (By similarity).

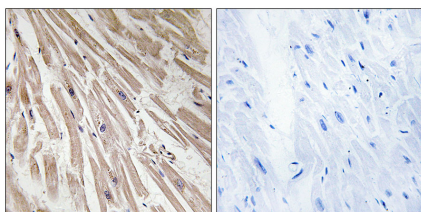
References

Brene S.,et al.J. Neurosci. 14:985-998(1994).
Hu R.-M.,et al.Proc. Natl. Acad. Sci. U.S.A. 97:9543-9548(2000).
Ota T.,et al.Nat. Genet. 36:40-45(2004).
Mural R.J.,et al.Submitted (JUL-2005) to the EMBL/GenBank/DDBJ databases.
Bechtel S.,et al.BMC Genomics 8:399-399(2007).

Images



Western blot analysis of lysates from SH-SY5Y cell line and human brain tissue lysate(from left to right),using ARPP21 Antibody, was diluted at 1:1000 at each lane. A goat anti-rabbit IgG H&L(HRP) at 1:5000 dilution was used as the secondary antibody.Lysates at 35ug per lane.



Immunohistochemistry analysis of paraffin-embedded human heart tissue, using ARPP21 antibody.

Please note: All products are 'FOR RESEARCH USE ONLY. NOT FOR USE IN DIAGNOSTIC OR THERAPEUTIC PROCEDURES'.