

DMGDH Antibody

Purified Rabbit Polyclonal Antibody (Pab)

Catalog # AP50847

Product Information

Application	WB
Primary Accession	Q9UI17
Reactivity	Human
Host	Rabbit
Clonality	polyclonal
Calculated MW	96811

Additional Information

Gene ID	29958
Other Names	Dimethylglycine dehydrogenase, mitochondrial, ME2GLYDH, DMGDH
Dilution	WB~~ 1:1000
Format	Rabbit IgG in phosphate buffered saline (without Mg ²⁺ and Ca ²⁺), pH 7.4, 150mM NaCl, 0.09% (W/V) sodium azide and 50% glycerol.
Storage Conditions	-20°C

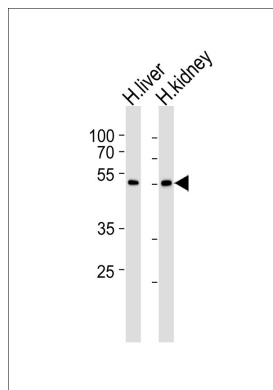
Protein Information

Name	DMGDH
Function	Catalyzes the demethylation of N,N-dimethylglycine to sarcosine. Also has activity with sarcosine in vitro.
Cellular Location	Mitochondrion.

References

Binzak B.A.,et al.Mol. Genet. Metab. 69:181-187(2000).
Binzak B.A.,et al.Am. J. Hum. Genet. 68:839-847(2001).
Ota T.,et al.Nat. Genet. 36:40-45(2004).
Schmutz J.,et al.Nature 431:268-274(2004).
Moolenaar S.H.,et al.Clin. Chem. 45:459-464(1999).

Images



Western blot analysis of lysates from human liver and kidney tissue lysate (from left to right), using DMGDH Antibody (AP50847). AP50847 was diluted at 1:1000 at each lane. A goat anti-rabbit IgG H&L (HRP) at 1:5000 dilution was used as the secondary antibody. Lysates at 35ug per lane.

Please note: All products are 'FOR RESEARCH USE ONLY. NOT FOR USE IN DIAGNOSTIC OR THERAPEUTIC PROCEDURES'.