

OGFR Antibody

Purified Rabbit Polyclonal Antibody (Pab)

Catalog # AP50848

Product Information

Application	WB
Primary Accession	Q9NZT2
Reactivity	Human
Host	Rabbit
Clonality	polyclonal
Calculated MW	73325

Additional Information

Gene ID	11054
Other Names	Opioid growth factor receptor, OGF _r , Protein 7-60, Zeta-type opioid receptor, OGFR
Dilution	WB~~ 1:1000
Format	Rabbit IgG in phosphate buffered saline (without Mg ²⁺ and Ca ²⁺), pH 7.4, 150mM NaCl, 0.09% (W/V) sodium azide and 50% glycerol.
Storage Conditions	-20°C

Protein Information

Name	OGFR
Function	Receptor for opioid growth factor (OGF), also known as Met- enkephalin. Seems to be involved in growth regulation.
Cellular Location	Cytoplasm. Nucleus. Note=The OGF/OGFR complex is probably translocated to the nucleus
Tissue Location	Highly expressed in the heart and liver, moderately in skeletal muscle and kidney and to a lesser extent in brain and pancreas. Expressed in fetal tissues including liver and kidney

Background

Receptor for opioid growth factor (OGF), also known as Met-enkephalin. Seems to be involved in growth regulation.

References

Zagon I.S.,et al.Brain Res. 856:75-83(2000).

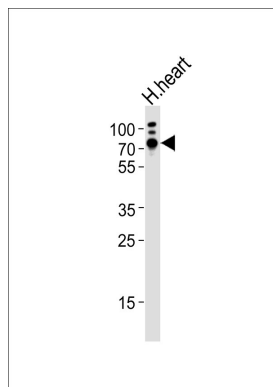
Takanosu M.,et al.Submitted (DEC-1998) to the EMBL/GenBank/DDBJ databases.

Deloukas P.,et al.Nature 414:865-871(2001).

Hattori A.,et al.DNA Res. 7:357-366(2000).

Zagon I.S.,et al.Brain Res. Brain Res. Rev. 38:351-376(2002).

Images



Western blot analysis of lysate from human heart tissue lysate,using OGFR Antibody,was diluted at 1:1000. A goat anti-rabbit IgG H&L(HRP) at 1:5000 dilution was used as the secondary antibody.Lysate at 35ug.

Please note: All products are 'FOR RESEARCH USE ONLY. NOT FOR USE IN DIAGNOSTIC OR THERAPEUTIC PROCEDURES'.