

SLC39A1 Antibody

Purified Rabbit Polyclonal Antibody (Pab)

Catalog # AP50852

Product Information

Application	WB
Primary Accession	Q9NY26
Reactivity	Human
Host	Rabbit
Clonality	polyclonal
Calculated MW	34250

Additional Information

Gene ID	27173
Other Names	Zinc transporter ZIP1, Solute carrier family 39 member 1, Zinc-iron-regulated transporter-like, Zrt- and Irt-like protein 1, ZIP-1, hZIP1, SLC39A1, IRT1, ZIP1, ZIRTL
Dilution	WB~~ 1:1000
Format	Rabbit IgG in phosphate buffered saline (without Mg ²⁺ and Ca ²⁺), pH 7.4, 150mM NaCl, 0.09% (W/V) sodium azide and 50% glycerol.
Storage Conditions	-20°C

Protein Information

Name	SLC39A1 (HGNC:12876)
Function	Transporter for the divalent cation Zn(2+). Mediates the influx of Zn(2+) into cells from extracellular space (PubMed: 11301334 , PubMed: 12888280 , PubMed: 16844077). Functions as the major importer of zinc from circulating blood plasma into prostate cells (PubMed: 12888280).
Cellular Location	Cell membrane; Multi-pass membrane protein. Endoplasmic reticulum membrane; Multi-pass membrane protein. Note=Shows a vesicular localization corresponding partially to the endoplasmic reticulum in several epithelial cell lines.
Tissue Location	Ubiquitous (PubMed:10610721, PubMed:11301334). Expressed in most adult and fetal tissues including the epidermis

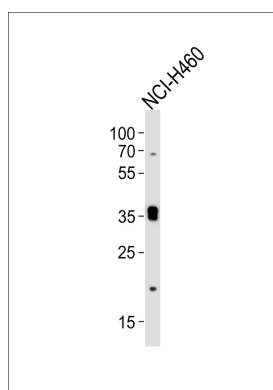
Background

Mediates zinc uptake. May function as a major endogenous zinc uptake transporter in many cells of the body. Responsible for the rapid uptake and accumulation of physiologically effective zinc in prostate cells.

References

Lioumi M.,et al.Genomics 62:272-280(1999).
Milon B.,et al.FEBS Lett. 507:241-246(2001).
Lai C.-H.,et al.Genome Res. 10:703-713(2000).
Ota T.,et al.Nat. Genet. 36:40-45(2004).
Otsuki T.,et al.DNA Res. 12:117-126(2005).

Images



Western blot analysis of lysate from NCI-H460 cell line, using SLC39A1 Antibody, was diluted at 1:1000. A goat anti-rabbit IgG H&L(HRP) at 1:5000 dilution was used as the secondary antibody. Lysate at 35ug.

Please note: All products are 'FOR RESEARCH USE ONLY. NOT FOR USE IN DIAGNOSTIC OR THERAPEUTIC PROCEDURES'.