

KLF2 Antibody

Purified Rabbit Polyclonal Antibody (Pab)

Catalog # AP50863

Product Information

Application	WB, IHC-P, IHC-F, IF
Primary Accession	Q9Y5W3
Reactivity	Human, Mouse, Rat, Rabbit, Sheep
Host	Rabbit
Clonality	Polyclonal
Calculated MW	37420
Physical State	Liquid
Immunogen	KLH conjugated synthetic peptide derived from human KLF2
Epitope Specificity	251-355/355
Isotype	IgG
Purity	affinity purified by Protein A
Buffer	0.01M TBS (pH7.4) with 1% BSA, 0.02% Proclin300 and 50% Glycerol.
SUBCELLULAR LOCATION	Nucleus.
SIMILARITY	Belongs to the krueppel C2H2-type zinc-finger protein family.Contains 3 C2H2-type zinc fingers.
SUBUNIT	Interacts with WWP1.
Post-translational modifications	Ubiquitinated. Polyubiquitination involves WWP1 and leads to proteasomal degradation of this protein.
Important Note	This product as supplied is intended for research use only, not for use in human, therapeutic or diagnostic applications.
Background Descriptions	Kruppel-like factors (KLFs) are a family of broadly expressed zinc finger transcription factors. KLF2 regulates T-cell trafficking by promoting expression of the lipid-binding receptor S1P1 (S1PR1; MIM 601974) and the selectin CD62L (SELL; MIM 153240) (summary by Weinreich et al., 2009 [PubMed 19592277]).[supplied by OMIM, Feb 2011]

Additional Information

Gene ID	10365
Other Names	Krueppel-like factor 2, Lung krueppel-like factor, KLF2, LKLF
Dilution	WB=1:100-500,IHC-P=1:100-500,IHC-F=1:100-500,IF=1:100-500,Flow-Cyt=1ug/Test
Format	0.01M TBS(pH7.4) with 1% BSA, 0.09% (W/V) sodium azide and 50% Glyce
Storage	Store at -20 °C for one year. Avoid repeated freeze/thaw cycles. When reconstituted in sterile pH 7.4 0.01M PBS or diluent of antibody the antibody is stable for at least two weeks at 2-4 °C.

Protein Information

Name	KLF2
Synonyms	LKLF
Function	Transcription factor that binds to the CACCC box in the promoter of target genes such as HBB/beta globin or NOV and activates their transcription (PubMed: 21063504). Might be involved in transcriptional regulation by modulating the binding of the RARA nuclear receptor to RARE DNA elements (PubMed: 28167758).
Cellular Location	Nucleus.

Background

Binds to the CACCC box in the beta-globin gene promoter and activates transcription (By similarity).

References

Kozyrev S.V.,et al.FEBS Lett. 448:149-152(1999).
Wani M.A.,et al.Genomics 60:78-86(1999).
Lee H.J.,et al.Submitted (NOV-1999) to the EMBL/GenBank/DDBJ databases.
Conkright M.D.,et al.J. Biol. Chem. 276:29299-29306(2001).

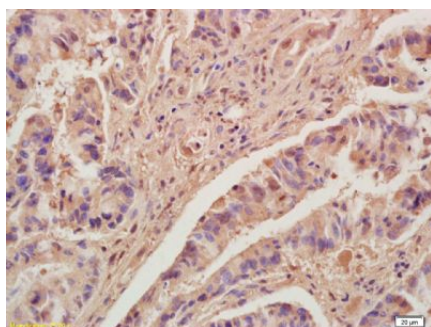
Images

Image not found :
201410/AP50863_IHC-P_1.jpg

Formalin-fixed and paraffin embedded human colon carcinoma labeled with Anti-KLF2 Polyclonal Antibody, Unconjugated (AP50863) at 1:200, followed by conjugation to the secondary antibody and DAB staining

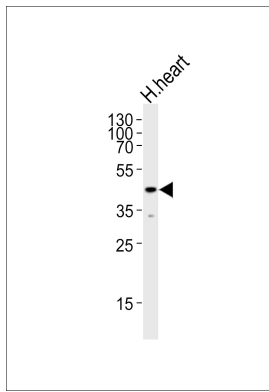
Image not found : 201410/AP50863_IF_1.jpg

Formalin-fixed and paraffin-embedded mouse embryo labeled with Anti-KLF2 Polyclonal Antibody, Unconjugated(AP50863) 1:200, overnight at 4°C, The secondary antibody was Goat Anti-Rabbit IgG, Cy3 conjugated(bs-0295G-Cy3)used at 1:200 dilution for 40 minutes at 37°C.



Tissue/cell: human colon carcinoma ; 4%
Paraformaldehyde-fixed and paraffin-embedded; Antigen retrieval: citrate buffer (0.01M, pH 6.0), Boiling bathing for 15min; Block endogenous peroxidase by 3% Hydrogen peroxide for 30min; Blocking buffer at 37°C for 20 min; Incubation: Anti-KLF2 Polyclonal Antibody, Unconjugated1:200, overnight at 4°C, followed by conjugation to the secondary antibody and DAB staining

Mouse embryo lysates probed with Anti KLF2 Polyclonal Antibody, Unconjugated (AP50863) at 1:200 overnight at 4 °C. Followed by conjugation to secondary antibody at



1:3000 for 90 min at 37 °C.

Please note: All products are 'FOR RESEARCH USE ONLY. NOT FOR USE IN DIAGNOSTIC OR THERAPEUTIC PROCEDURES'.