

FBLN2 Antibody

Purified Rabbit Polyclonal Antibody (Pab)

Catalog # AP50941

Product Information

Application	WB
Primary Accession	P98095
Reactivity	Rat
Host	Rabbit
Clonality	Polyclonal
Calculated MW	126573

Additional Information

Gene ID	2199
Other Names	Fibulin-2, FIBL-2, FBLN2
Dilution	WB~~ 1:500
Format	Rabbit IgG in phosphate buffered saline , pH 7.4, 150mM NaCl, 0.09% (W/V) sodium azide and 56% glycerol
Storage	Store at -20 °C.Stable for 12 months from date of receipt

Protein Information

Name	FBLN2
Function	Its binding to fibronectin and some other ligands is calcium dependent. May act as an adapter that mediates the interaction between FBN1 and ELN (PubMed: 17255108).
Cellular Location	Secreted, extracellular space, extracellular matrix
Tissue Location	Component of both basement membranes and other connective tissues. Expressed in heart, placenta and ovary

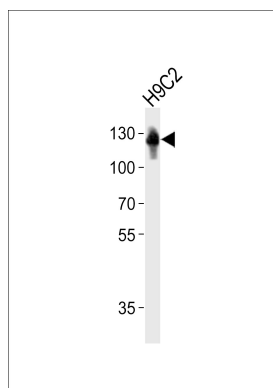
Background

Its binding to fibronectin and some other ligands is calcium dependent.

References

Zhang R.-Z.,et al.Genomics 22:425-430(1994).
Li D.,et al.Submitted (JUL-2002) to the EMBL/GenBank/DDBJ databases.
Ota T.,et al.Nat. Genet. 36:40-45(2004).
Muzny D.M.,et al.Nature 440:1194-1198(2006).
Miosge N.,et al.Histochem. J. 28:109-116(1996).

Images



Western blot analysis of lysate from rat H9C2 cell line, using FBLN2 Antibody(AP50941).AP50941 was diluted at 1:500. A goat anti-rabbit IgG H&L(HRP) at 1:10000 dilution was used as the secondary antibody.Lysate at 20ug.

Please note: All products are 'FOR RESEARCH USE ONLY. NOT FOR USE IN DIAGNOSTIC OR THERAPEUTIC PROCEDURES'.