

# Gamma-adducin Antibody

Purified Rabbit Polyclonal Antibody (Pab)

Catalog # AP50966

## Product Information

---

Application	WB
Primary Accession	<a href="#">Q9UEY8</a>
Reactivity	Human, Mouse, Rat
Host	Rabbit
Clonality	Polyclonal
Calculated MW	79155

## Additional Information

---

Gene ID	120
Other Names	Gamma-adducin, Adducin-like protein 70, ADD3, ADDL
Target/Specificity	KLH conjugated synthetic peptide derived from human Gamma-adducin
Dilution	WB~~ 1:1000
Format	0.01M PBS, pH 7.2, 0.09% (W/V) Sodium azide, Glycerol 50%
Storage	Store at -20 °C.Stable for 12 months from date of receipt

## Protein Information

---

Name	ADD3
Synonyms	ADDL
Function	Membrane-cytoskeleton-associated protein that promotes the assembly of the spectrin-actin network. Plays a role in actin filament capping (PubMed: <a href="#">23836506</a> ). Binds to calmodulin (Probable). Involved in myogenic reactivity of the renal afferent arteriole (Af-art), renal interlobular arteries and middle cerebral artery (MCA) to increased perfusion pressure. Involved in regulation of potassium channels in the vascular smooth muscle cells (VSMCs) of the Af-art and MCA ex vivo. Involved in regulation of glomerular capillary pressure, glomerular filtration rate (GFR) and glomerular nephrin expression in response to hypertension. Involved in renal blood flow (RBF) autoregulation. Plays a role in podocyte structure and function. Regulates globular monomer actin (G-actin) and filamentous polymer actin (F-actin) ratios in the primary podocytes affecting actin cytoskeleton organization. Regulates expression of synaptopodin, RhoA, Rac1 and CDC42 in the renal cortex and the primary podocytes. Regulates expression of nephrin in the glomeruli and in the primary podocytes, expression of nephrin and podocinin

in the renal cortex, and expression of focal adhesion proteins integrin alpha-3 and integrin beta-1 in the glomeruli. Involved in cell migration and cell adhesion of podocytes, and in podocyte foot process effacement. Regulates expression of profibrotic markers MMP2, MMP9, TGF beta-1, tubular tight junction protein E-cadherin, and mesenchymal markers vimentin and alpha-SMA (By similarity). Promotes the growth of neurites (By similarity).

#### Cellular Location

Cytoplasm, cytoskeleton {ECO:0000250|UniProtKB:Q62847}. Cell membrane {ECO:0000250|UniProtKB:Q62847}; Peripheral membrane protein; Cytoplasmic side. Cytoplasm {ECO:0000250|UniProtKB:Q9QYB5}. Note=Full-length protein and the cleavage fragment 358-706 localize mainly to the cytoplasm, while cleavage fragment 1-357 translocates from the cytoplasm to the nucleus. {ECO:0000250|UniProtKB:Q9QYB5}

#### Tissue Location

[Isoform 1]: ubiquitously expressed.

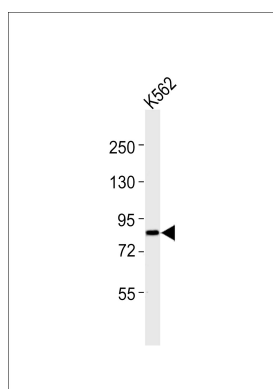
## Background

Membrane-cytoskeleton-associated protein that promotes the assembly of the spectrin-actin network. Binds to calmodulin.

## References

Katagiri T., et al. *Cytogenet. Cell Genet.* 74:90-95(1996).  
Moorthy S., et al. Submitted (SEP-1995) to the EMBL/GenBank/DDBJ databases.  
Citterio L., et al. *Biochem. Biophys. Res. Commun.* 266:110-114(1999).  
Bechtel S., et al. *BMC Genomics* 8:399-399(2007).  
Deloukas P., et al. *Nature* 429:375-381(2004).

## Images



Anti-Gamma-adducin Antibody at 1:1000 dilution + K562 whole cell lysates. Lysates/proteins at 20 µg per lane. Secondary Goat Anti-Rabbit IgG, (H+L), Peroxidase conjugated at 1/10000 dilution. Predicted band size : 79 kDa. Blocking/Dilution buffer: 5% NFDm/TBST.

Please note: All products are 'FOR RESEARCH USE ONLY. NOT FOR USE IN DIAGNOSTIC OR THERAPEUTIC PROCEDURES'.