

Apolipoprotein L2 Antibody

Purified Rabbit Polyclonal Antibody (Pab)

Catalog # AP50988

Product Information

Application	WB
Primary Accession	Q9BQE5
Reactivity	Human, Mouse, Rat
Host	Rabbit
Clonality	Polyclonal
Calculated MW	37078

Additional Information

Gene ID	23780
Other Names	Apolipoprotein L2, Apolipoprotein L-II, ApoL-II, APOL2
Target/Specificity	KLH-conjugated synthetic peptide encompassing a sequence within the center region of human Apolipoprotein L2. The exact sequence is proprietary.
Dilution	WB~~ 1:1000
Format	0.01M PBS, pH 7.2, 0.09% (W/V) Sodium azide, Glycerol 50%
Storage	Store at -20 °C.Stable for 12 months from date of receipt

Protein Information

Name	APOL2
Function	May affect the movement of lipids in the cytoplasm or allow the binding of lipids to organelles.
Cellular Location	Cytoplasm.
Tissue Location	Widely expressed; the highest levels are found in lung, thymus, pancreas, placenta, adult brain and prostate; also detected in spleen, liver, kidney, colon, small intestine, uterus, spinal cord, adrenal gland, salivary gland, trachea, mammary gland, skeletal muscle, testis and fetal brain and liver

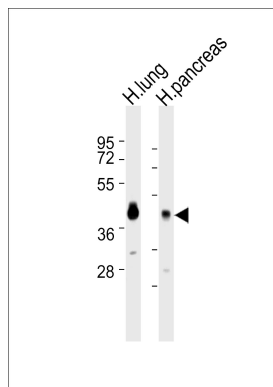
Background

May affect the movement of lipids in the cytoplasm or allow the binding of lipids to organelles.

References

Page N.M.,et al.Genomics 74:71-78(2001).
Duchateau P.N.,et al.J. Lipid Res. 42:620-630(2001).
Monajemi H.,et al.Genomics 79:539-546(2002).
Ota T.,et al.Nat. Genet. 36:40-45(2004).
Totoki Y.,et al.Submitted (MAR-2005) to the EMBL/GenBank/DBJ databases.

Images



All lanes : Anti-Apolipoprotein L2 Antibody at 1:1000 dilution
Lane 1: H.lung tissue lysates Lane 2: H.pancreas tissue lysates
Lysates/proteins at 20 µg per lane.
Secondary Goat Anti-Rabbit IgG, (H+L), Peroxidase conjugated at 1/10000 dilution
Predicted band size : 37 kDa
Blocking/Dilution buffer: 5% NFDM/TBST.

Please note: All products are 'FOR RESEARCH USE ONLY. NOT FOR USE IN DIAGNOSTIC OR THERAPEUTIC PROCEDURES'.