

ARRDC1 Antibody

Purified Rabbit Polyclonal Antibody (Pab)

Catalog # AP50997

Product Information

Application	WB
Primary Accession	Q8N5I2
Reactivity	Human
Host	Rabbit
Clonality	Polyclonal
Calculated MW	45981

Additional Information

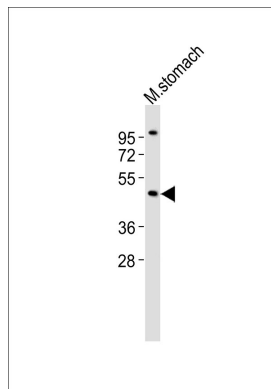
Gene ID	92714
Other Names	Arrestin domain-containing protein 1, ARRDC1
Target/Specificity	KLH conjugated synthetic peptide derived from human ARRDC1
Dilution	WB~~ 1:1000
Format	0.01M PBS, pH 7.2, 0.09% (W/V) Sodium azide, Glycerol 50%
Storage	Store at -20 °C.Stable for 12 months from date of receipt

Protein Information

Name	ARRDC1 (HGNC:28633)
Function	Functions as an adapter recruiting ubiquitin-protein ligases to their specific substrates (PubMed: 23886940 , PubMed: 27462458). Through an ubiquitination-dependent mechanism plays for instance a role in the incorporation of SLC11A2 into extracellular vesicles (PubMed: 27462458). More generally, plays a role in the extracellular transport of proteins between cells through the release in the extracellular space of microvesicles (PubMed: 22315426). By participating in the ITCH-mediated ubiquitination and subsequent degradation of NOTCH1, negatively regulates the NOTCH signaling pathway (PubMed: 23886940).
Cellular Location	Cell membrane. Note=Also found in extracellular vesicles different from exosomes.

References

Images



Anti-ARRDC1 Antibody at 1:1000 dilution + mouse stomach lysates Lysates/proteins at 20 µg per lane. Secondary Goat Anti-Rabbit IgG, (H+L), Peroxidase conjugated at 1/10000 dilution Predicted band size : 46 kDa Blocking/Dilution buffer: 5% NFDM/TBST.

Please note: All products are 'FOR RESEARCH USE ONLY. NOT FOR USE IN DIAGNOSTIC OR THERAPEUTIC PROCEDURES'.