

# Roundabout 4 Antibody (N-term)

Affinity Purified Rabbit Polyclonal Antibody (Pab)

Catalog # AP5099a

## Product Information

---

<b>Application</b>	WB, IHC-P, FC, E
<b>Primary Accession</b>	<a href="#">Q8WZ75</a>
<b>Reactivity</b>	Human
<b>Host</b>	Rabbit
<b>Clonality</b>	Polyclonal
<b>Isotype</b>	Rabbit IgG
<b>Calculated MW</b>	107457
<b>Antigen Region</b>	236-264

## Additional Information

---

<b>Gene ID</b>	54538
<b>Other Names</b>	Roundabout homolog 4, Magic roundabout, ROBO4
<b>Target/Specificity</b>	This Roundabout 4 antibody is generated from rabbits immunized with a KLH conjugated synthetic peptide between 236-264 amino acids from the N-terminal region of human Roundabout 4.
<b>Dilution</b>	WB~~1:1000 IHC-P~~1:100~500 FC~~1:10~50 E~~Use at an assay dependent concentration.
<b>Format</b>	Purified polyclonal antibody supplied in PBS with 0.05% (V/V) Proclin 300. This antibody is purified through a protein A column, followed by peptide affinity purification.
<b>Storage</b>	Maintain refrigerated at 2-8°C for up to 2 weeks. For long term storage store at -20°C in small aliquots to prevent freeze-thaw cycles.
<b>Precautions</b>	Roundabout 4 Antibody (N-term) is for research use only and not for use in diagnostic or therapeutic procedures.

## Protein Information

---

<b>Name</b>	ROBO4
<b>Function</b>	Receptor for Slit proteins, at least for SLIT2, and seems to be involved in angiogenesis and vascular patterning. May mediate the inhibition of primary endothelial cell migration by Slit proteins (By similarity). Involved in the maintenance of endothelial barrier organization and function (PubMed: <a href="#">30455415</a> ).

## Tissue Location

Specifically expressed in endothelial cells. Expressed in endothelial and intimal cells of the ascending aorta (PubMed:30455415).

## Background

Roundabout 4 is receptor for Slit proteins, at least for SLIT2, and seems to be involved in angiogenesis and vascular patterning. This protein may mediate the inhibition of primary endothelial cell migration by Slit proteins.

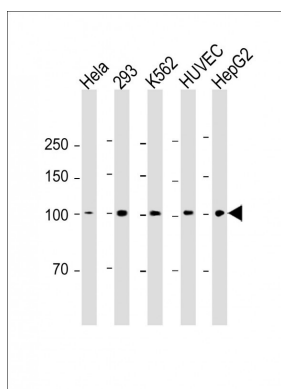
## References

Jones, C.A., et al. Nat. Cell Biol. 11(11):1325-1331(2009)

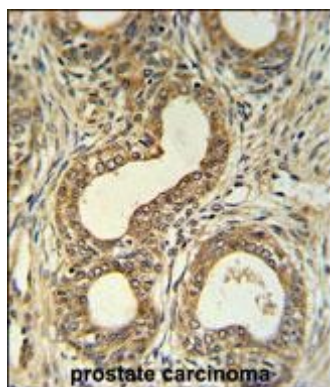
Sheldon, H., et al. FASEB J. 23(2):513-522(2009)

Huang, L., et al. Mol. Vis. 15, 1057-1069 (2009)

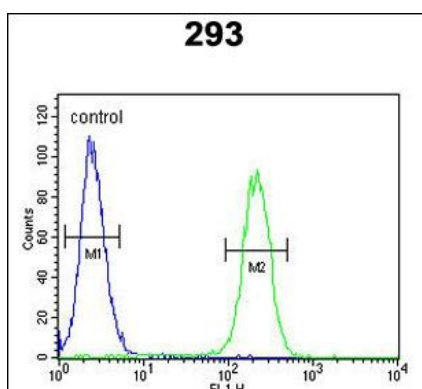
## Images



All lanes: Anti-Roundabout 4 Antibody (N-term) at 1:2000 dilution Lane 1: HeLa whole cell lysate Lane 2: 293 whole cell lysate Lane 3: K562 whole cell lysate Lane 4: HUVEC whole cell lysate Lane 5: HepG2 whole cell lysate Lysates/proteins at 20 µg per lane. Secondary: Goat Anti-Rabbit IgG, (H+L), Peroxidase conjugated (ASP1615) at 1/15000 dilution. Observed band size: 107 KDa Blocking/Dilution buffer: 5% NFDM/TBST.



Roundabout 4 Antibody (N-term) (Cat. #AP5099a) IHC analysis in formalin fixed and paraffin embedded prostate carcinoma followed by peroxidase conjugation of the secondary antibody and DAB staining. This data demonstrates the use of the Roundabout 4 Antibody (N-term) for immunohistochemistry. Clinical relevance has not been evaluated.



Roundabout 4 Antibody (N-term) (Cat. #AP5099a) flow cytometric analysis of 293 cells (right histogram) compared to a negative control cell (left histogram). FITC-conjugated goat-anti-rabbit secondary antibodies were used for the analysis.

Please note: All products are 'FOR RESEARCH USE ONLY. NOT FOR USE IN DIAGNOSTIC OR THERAPEUTIC PROCEDURES'.