

Carbonic Anhydrase 1 Antibody

Purified Rabbit Polyclonal Antibody (Pab)

Catalog # AP51028

Product Information

Application	WB
Primary Accession	P00915
Reactivity	Human, Mouse, Rat
Host	Rabbit
Clonality	Polyclonal
Calculated MW	28870

Additional Information

Gene ID	759
Other Names	Carbonic anhydrase 1, Carbonate dehydratase I, Carbonic anhydrase B, CAB, Carbonic anhydrase I, CA-I, CA1
Target/Specificity	KLH-conjugated synthetic peptide encompassing a sequence within the center region of human Carbonic Anhydrase 1. The exact sequence is proprietary.
Dilution	WB~~ 1:1000
Format	0.01M PBS, pH 7.2, 0.09% (W/V) Sodium azide, Glycerol 50%
Storage	Store at -20 °C. Stable for 12 months from date of receipt

Protein Information

Name	CA1
Function	Catalyzes the reversible hydration of carbon dioxide (PubMed: 10550681 , PubMed: 16506782 , PubMed: 16686544 , PubMed: 16807956 , PubMed: 17127057 , PubMed: 17314045 , PubMed: 17407288 , PubMed: 18618712 , PubMed: 19186056 , PubMed: 19206230). Can hydrate cyanamide to urea (PubMed: 10550681).
Cellular Location	Cytoplasm {ECO:0000250 UniProtKB:B0BNN3}.

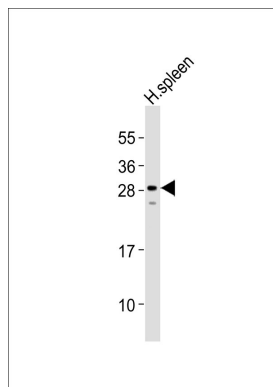
Background

Reversible hydration of carbon dioxide. Can hydrates cyanamide to urea.

References

- Barlow J.H.,et al.Nucleic Acids Res. 15:2386-2386(1987).
Lowe N.,et al.Gene 93:277-283(1990).
Giraud N.,et al.Biochimie 56:1031-1043(1974).
Andersson B.,et al.Biochem. Biophys. Res. Commun. 48:670-677(1972).
Lin K.-T.D.,et al.J. Biol. Chem. 248:1885-1893(1973).

Images



Anti-Carbonic Anhydrase 1 Antibody at 1:1000 dilution + human spleen lysates Lysates/proteins at 20 µg per lane. Secondary Goat Anti-Rabbit IgG, (H+L), Peroxidase conjugated at 1/10000 dilution Predicted band size : 29 kDa Blocking/Dilution buffer: 5% NFDM/TBST.

Please note: All products are 'FOR RESEARCH USE ONLY. NOT FOR USE IN DIAGNOSTIC OR THERAPEUTIC PROCEDURES'.