

# CADM4 Antibody

Purified Rabbit Polyclonal Antibody (Pab)

Catalog # AP51030

## Product Information

---

<b>Application</b>	WB
<b>Primary Accession</b>	<a href="#">Q8NFZ8</a>
<b>Reactivity</b>	Human, Mouse, Rat
<b>Host</b>	Rabbit
<b>Clonality</b>	Polyclonal
<b>Calculated MW</b>	42785

## Additional Information

---

<b>Gene ID</b>	199731
<b>Other Names</b>	Cell adhesion molecule 4, Immunoglobulin superfamily member 4C, IgSF4C, Nectin-like protein 4, NECL-4, TSLC1-like protein 2, CADM4, IGSF4C, NECL4, TSLL2
<b>Target/Specificity</b>	KLH conjugated synthetic peptide derived from human CADM4
<b>Dilution</b>	WB~~ 1:1000
<b>Format</b>	0.01M PBS, pH 7.2, 0.09% (W/V) Sodium azide, Glycerol 50%
<b>Storage</b>	Store at -20 °C.Stable for 12 months from date of receipt

## Protein Information

---

<b>Name</b>	CADM4
<b>Synonyms</b>	IGSF4C, NECL4, TSLL2
<b>Function</b>	Involved in the cell-cell adhesion. Has calcium- and magnesium-independent cell-cell adhesion activity. May have tumor- suppressor activity.
<b>Cellular Location</b>	Membrane; Single-pass type I membrane protein
<b>Tissue Location</b>	Expressed in brain, prostate, brain, kidney and some other organs.

## Background

---

Involved in the cell-cell adhesion. Has calcium- and magnesium-independent cell-cell adhesion activity. May have tumor- suppressor activity.

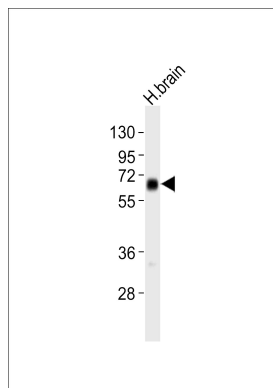
## References

---

Fukuhara H.,et al.Oncogene 20:5401-5407(2001).  
Ota T.,et al.Nat. Genet. 36:40-45(2004).  
Grimwood J.,et al.Nature 428:529-535(2004).  
Williams Y.N.,et al.Oncogene 25:1446-1453(2006).

## Images

---



Anti-CADM4 Antibody at 1:1000 dilution + H.brain tissue lysates. Lysates/proteins at 20 µg per lane. Secondary Goat Anti-Rabbit IgG, (H+L), Peroxidase conjugated at 1/10000 dilution. Predicted band size : 43 kDa. Blocking/Dilution buffer: 5% NFDM/TBST.

Please note: All products are 'FOR RESEARCH USE ONLY. NOT FOR USE IN DIAGNOSTIC OR THERAPEUTIC PROCEDURES'.