

# CAMKV Antibody

Purified Rabbit Polyclonal Antibody (Pab)  
Catalog # AP51032

## Product Information

---

<b>Application</b>	WB
<b>Primary Accession</b>	<a href="#">Q8NCB2</a>
<b>Reactivity</b>	Human, Mouse, Rat
<b>Host</b>	Rabbit
<b>Clonality</b>	Polyclonal
<b>Calculated MW</b>	54354

## Additional Information

---

<b>Gene ID</b>	79012
<b>Other Names</b>	CaM kinase-like vesicle-associated protein, CAMKV
<b>Target/Specificity</b>	KLH-conjugated synthetic peptide encompassing a sequence within the center region of human CAMKV. The exact sequence is proprietary.
<b>Dilution</b>	WB~~ 1:1000
<b>Format</b>	0.01M PBS, pH 7.2, 0.09% (W/V) Sodium azide, Glycerol 50%
<b>Storage</b>	Store at -20 °C. Stable for 12 months from date of receipt

## Protein Information

---

<b>Name</b>	CAMKV
<b>Function</b>	Does not appear to have detectable kinase activity.
<b>Cellular Location</b>	Cell membrane; Peripheral membrane protein. Cytoplasmic vesicle membrane; Peripheral membrane protein. Note=Predominantly observed in association with the plasma membrane of soma and in neurites, both axons and dendrites. May be associated with vesicular structures (By similarity).

## Background

---

Does not appear to have detectable kinase activity.

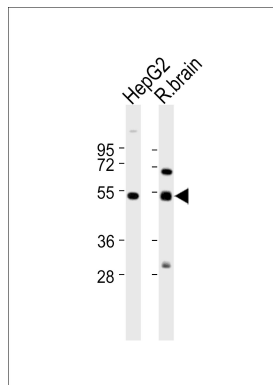
## References

---

Ota T.,et al.Nat. Genet. 36:40-45(2004).  
Wiemann S.,et al.Genome Res. 11:422-435(2001).  
Ebert L.,et al.Submitted (JUN-2004) to the EMBL/GenBank/DDBJ databases.  
Bechtel S.,et al.BMC Genomics 8:399-399(2007).  
Muzny D.M.,et al.Nature 440:1194-1198(2006).

## Images

---



All lanes : Anti-CAMKV Antibody at 1:1000 dilution Lane 1:  
HepG2 whole cell lysates Lane 2: R.brain tissue lysates  
Lysates/proteins at 20 µg per lane. Secondary Goat  
Anti-Rabbit IgG, (H+L), Peroxidase conjugated at 1/10000  
dilution Predicted band size : 54 kDa Blocking/Dilution  
buffer: 5% NFD/MTBST.

Please note: All products are 'FOR RESEARCH USE ONLY. NOT FOR USE IN DIAGNOSTIC OR THERAPEUTIC PROCEDURES'.