

# Cyclin G1 Antibody

Purified Rabbit Polyclonal Antibody (Pab)

Catalog # AP51054

## Product Information

---

<b>Application</b>	WB
<b>Primary Accession</b>	<a href="#">P51959</a>
<b>Reactivity</b>	Human, Mouse, Rat
<b>Host</b>	Rabbit
<b>Clonality</b>	Polyclonal
<b>Calculated MW</b>	34074

## Additional Information

---

<b>Gene ID</b>	900
<b>Other Names</b>	Cyclin-G1, Cyclin-G, CCNG1, CCNG, CYCG1
<b>Target/Specificity</b>	KLH conjugated synthetic peptide derived from human Cyclin G1
<b>Dilution</b>	WB~~ 1:1000
<b>Format</b>	0.01M PBS, pH 7.2, 0.09% (W/V) Sodium azide, Glycerol 50%
<b>Storage</b>	Store at -20 °C.Stable for 12 months from date of receipt

## Protein Information

---

<b>Name</b>	CCNG1
<b>Synonyms</b>	CCNG, CYCG1
<b>Function</b>	May play a role in growth regulation. Is associated with G2/M phase arrest in response to DNA damage. May be an intermediate by which p53 mediates its role as an inhibitor of cellular proliferation (By similarity).
<b>Cellular Location</b>	Nucleus. Note=DNA replication foci after DNA damage
<b>Tissue Location</b>	High levels in skeletal muscle, ovary, kidney and colon

## Background

---

May play a role in growth regulation. Is associated with G2/M phase arrest in response to DNA damage. May be an intermediate by which p53 mediates its role as an inhibitor of cellular proliferation (By similarity).

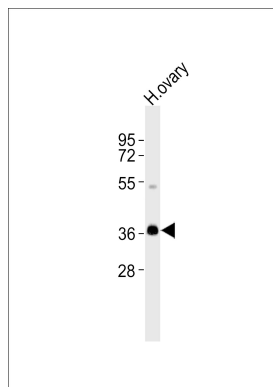
## References

---

Horne M.C.,et al.J. Biol. Chem. 271:6050-6061(1996).  
Bates S.A.,et al.Oncogene 13:1103-1109(1996).  
Endo Y.,et al.Genomics 38:92-95(1996).  
Reimer C.L.,et al.J. Biol. Chem. 274:11022-11029(1999).  
Ota T.,et al.Nat. Genet. 36:40-45(2004).

## Images

---



Anti-Cyclin G1 Antibody at 1:1000 dilution + human ovary lysates Lysates/proteins at 20 µg per lane. Secondary Goat Anti-Rabbit IgG, (H+L), Peroxidase conjugated at 1/10000 dilution Predicted band size : 34 kDa  
Blocking/Dilution buffer: 5% NFDm/TBST.

Please note: All products are 'FOR RESEARCH USE ONLY. NOT FOR USE IN DIAGNOSTIC OR THERAPEUTIC PROCEDURES'.