

CEP57 Antibody

Purified Rabbit Polyclonal Antibody (Pab)

Catalog # AP51080

Product Information

Application	WB
Primary Accession	Q86XR8
Reactivity	Human
Host	Rabbit
Clonality	Polyclonal
Calculated MW	57089

Additional Information

Gene ID	9702
Other Names	Centrosomal protein of 57 kDa, Cep57, FGF2-interacting protein, Testis-specific protein 57, Translokin, CEP57, KIAA0092, TSP57
Target/Specificity	KLH conjugated synthetic peptide derived from human CEP57
Dilution	WB~~ 1:1000
Format	0.01M PBS, pH 7.2, 0.09% (W/V) Sodium azide, Glycerol 50%
Storage	Store at -20 °C.Stable for 12 months from date of receipt

Protein Information

Name	CEP57
Synonyms	KIAA0092, TSP57
Function	Centrosomal protein which may be required for microtubule attachment to centrosomes. May act by forming ring-like structures around microtubules. Mediates nuclear translocation and mitogenic activity of the internalized growth factor FGF2, but that of FGF1.
Cellular Location	Nucleus. Cytoplasm. Cytoplasm, cytoskeleton, microtubule organizing center, centrosome
Tissue Location	Ubiquitous..

Background

Centrosomal protein which may be required for microtubule attachment to centrosomes. May act by forming ring- like structures around microtubules. Mediates nuclear translocation and mitogenic activity of the internalized growth factor FGF2, but that of FGF1.

References

Bossard C.,et al.Nat. Cell Biol. 5:433-439(2003).

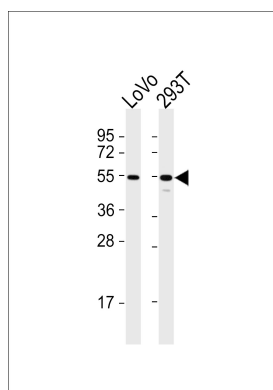
Kim J.W.,et al.Submitted (FEB-2003) to the EMBL/GenBank/DDBJ databases.

Nagase T.,et al.DNA Res. 2:37-43(1995).

Ota T.,et al.Nat. Genet. 36:40-45(2004).

Taylor T.D.,et al.Nature 440:497-500(2006).

Images



All lanes : Anti-CEP57 Antibody at 1:1000 dilution Lane 1: LoVo whole cell lysates Lane 2: 293T whole cell lysates Lysates/proteins at 20 µg per lane. Secondary Goat Anti-Rabbit IgG, (H+L), Peroxidase conjugated at 1/10000 dilution Predicted band size : 57 kDa Blocking/Dilution buffer: 5% NFDM/TBST.

Please note: All products are 'FOR RESEARCH USE ONLY. NOT FOR USE IN DIAGNOSTIC OR THERAPEUTIC PROCEDURES'.