

Claudin 10 Antibody

Purified Rabbit Polyclonal Antibody (Pab)

Catalog # AP51092

Product Information

Application	WB
Primary Accession	P78369
Reactivity	Human, Mouse, Rat
Host	Rabbit
Clonality	Polyclonal
Calculated MW	24488

Additional Information

Gene ID	9071
Other Names	Claudin-10, OSP-like protein, CLDN10
Target/Specificity	KLH conjugated synthetic peptide derived from human Claudin 10
Dilution	WB~~ 1:1000
Format	0.01M PBS, pH 7.2, 0.09% (W/V) Sodium azide, Glycerol 50%
Storage	Store at -20 °C.Stable for 12 months from date of receipt

Protein Information

Name	CLDN10 {ECO:0000303 PubMed:28771254, ECO:0000312 HGNC:HGNC:2033}
Function	Forms paracellular channels: polymerizes in tight junction strands with cation- and anion-selective channels through the strands, conveying epithelial permeability in a process known as paracellular tight junction permeability.
Cellular Location	[Isoform 1]: Cell junction, tight junction. Cell membrane; Multi-pass membrane protein
Tissue Location	Expressed in the kidney, eccrine sweat glands and in all layers of the epidermis. In the kidney, it is detected in the thick ascending limb of Henle's loop (TAL) (PubMed:28686597, PubMed:28771254). In the sweat glands, it is expressed in cells from secretory portions, corresponding to the clear cells (PubMed:28686597)

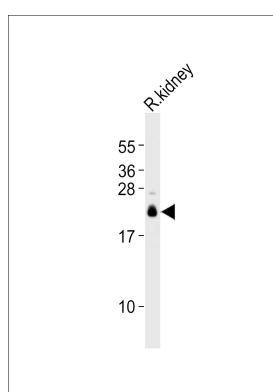
Background

Plays a major role in tight junction-specific obliteration of the intercellular space, through calcium-independent cell-adhesion activity. May form permselective paracellular pores; isoform 1 appears to create pores preferentially permeable to cations and isoform 2 for anions. Plays a key role in controlling cation selectivity and transport in the thick ascending limb (TAL) of Henle's loop in kidney.

References

Gunzel D.,et al.J. Cell Sci. 122:1507-1517(2009).
Keen T.J.,et al.Submitted (JUN-1998) to the EMBL/GenBank/DDBJ databases.
Ota T.,et al.Nat. Genet. 36:40-45(2004).
Ebert L.,et al.Submitted (JUN-2004) to the EMBL/GenBank/DDBJ databases.
Dunham A.,et al.Nature 428:522-528(2004).

Images



Anti-Claudin 10 Antibody at 1:1000 dilution + rat kidney lysates Lysates/proteins at 20 µg per lane. Secondary Goat Anti-Rabbit IgG, (H+L), Peroxidase conjugated at 1/10000 dilution Predicted band size : 24 kDa
Blocking/Dilution buffer: 5% NFDm/TBST.

Please note: All products are 'FOR RESEARCH USE ONLY. NOT FOR USE IN DIAGNOSTIC OR THERAPEUTIC PROCEDURES'.