

## BTG1 Antibody (Center)

Affinity Purified Rabbit Polyclonal Antibody (Pab)

Catalog # AP5111c

### Product Information

---

|                          |  |
|--------------------------|--|
| <b>Application</b>       | WB, IHC-P, E   |
| <b>Primary Accession</b> | <a href="#">P62324</a>   |
| <b>Other Accession</b>   | <a href="#">P27049</a> , <a href="#">Q04211</a> , <a href="#">P78543</a> , <a href="#">Q63073</a> , <a href="#">P62325</a> , <a href="#">P34743</a> , <a href="#">P53348</a> |
| <b>Reactivity</b>        | Human, Mouse   |
| <b>Predicted</b>         | Bovine, Chicken, Rat   |
| <b>Host</b>              | Rabbit   |
| <b>Clonality</b>         | Polyclonal   |
| <b>Isotype</b>           | Rabbit IgG   |
| <b>Clone Names</b>       | RB26174  |
| <b>Calculated MW</b>     | 19209  |
| <b>Antigen Region</b>    | 92-118   |

### Additional Information

---

|                           |   |
|---------------------------|---|
| <b>Gene ID</b>            | 694   |
| <b>Other Names</b>        | Protein BTG1, B-cell translocation gene 1 protein, BTG1   |
| <b>Target/Specificity</b> | This BTG1 antibody is generated from rabbits immunized with a KLH conjugated synthetic peptide between 92-118 amino acids from the Central region of human BTG1.            |
| <b>Dilution</b>           | WB~~1:1000 IHC-P~~1:100~500 E~~Use at an assay dependent concentration.   |
| <b>Format</b>             | Purified polyclonal antibody supplied in PBS with 0.05% (V/V) Proclin 300. This antibody is purified through a protein A column, followed by peptide affinity purification. |
| <b>Storage</b>            | Maintain refrigerated at 2-8°C for up to 2 weeks. For long term storage store at -20°C in small aliquots to prevent freeze-thaw cycles.                                     |
| <b>Precautions</b>        | BTG1 Antibody (Center) is for research use only and not for use in diagnostic or therapeutic procedures.  |

### Protein Information

---

|                 |                             |
|-----------------|-----------------------------|
| <b>Name</b>     | BTG1                        |
| <b>Function</b> | Anti-proliferative protein. |

## Background

---

BTG1 is a member of an anti-proliferative gene family that regulates cell growth and differentiation. Expression of this gene is highest in the G0/G1 phases of the cell cycle and downregulated when cells progressed through G1. The encoded protein interacts with several nuclear receptors, and functions as a coactivator of cell differentiation. This locus has been shown to be involved in a t(8;12)(q24;q22) chromosomal translocation in a case of B-cell chronic lymphocytic leukemia.

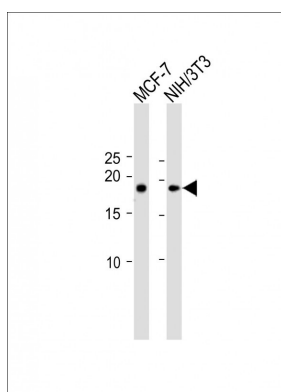
## References

---

Camina-Tato, M., et al. J. Neuroimmunol. 213 (1-2), 142-147 (2009) Zemunik, T., et al. Croat. Med. J. 50(1):23-33(2009) Takahashi, N., et al. Exp. Hematol. 36(12):1760-1770(2008)

## Images

---



All lanes: Anti-BTG1 Antibody (Center) at 1:1000 dilution  
Lane 1: MCF-7 whole cell lysate Lane 2: NIH/3T3 whole cell lysate Lysates/proteins at 20 µg per lane. Secondary: Goat Anti-Rabbit IgG, (H+L), Peroxidase conjugated (ASP1615) at 1/15000 dilution. Observed band size: 19 KDa Blocking/Dilution buffer: 5% NFDM/TBST.

## Citations

---

- [miR-511 promotes the proliferation of human hepatoma cells by targeting the 3'UTR of B cell translocation gene 1 \(BTG1\) mRNA.](#)

Please note: All products are 'FOR RESEARCH USE ONLY. NOT FOR USE IN DIAGNOSTIC OR THERAPEUTIC PROCEDURES'.