

CSRNP2 Antibody

Purified Rabbit Polyclonal Antibody (Pab)

Catalog # AP51120

Product Information

Application	WB
Primary Accession	Q9H175
Reactivity	Human, Mouse, Rat
Host	Rabbit
Clonality	Polyclonal
Calculated MW	59591

Additional Information

Gene ID	81566
Other Names	Cysteine/serine-rich nuclear protein 2, CSRNP-2, Protein FAM130A1, TGF-beta-induced apoptosis protein 12, TAIP-12, CSRNP2, C12orf22, FAM130A1, TAIP12
Target/Specificity	KLH conjugated synthetic peptide derived from human CSRNP2
Dilution	WB~~ 1:1000
Format	0.01M PBS, pH 7.2, 0.09% (W/V) Sodium azide, Glycerol 50%
Storage	Store at -20 °C.Stable for 12 months from date of receipt

Protein Information

Name	CSRNP2
Synonyms	C12orf22, FAM130A1, TAIP12
Function	Binds to the consensus sequence 5'-AGAGTG-3' and has transcriptional activator activity (By similarity). May play a role in apoptosis.
Cellular Location	Nucleus.

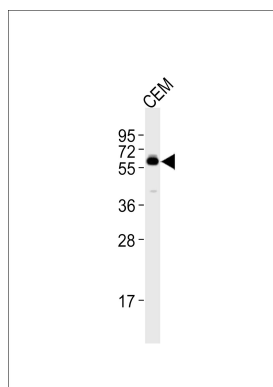
Background

Binds to the consensus sequence 5'-AGAGTG-3' and has transcriptional activator activity (By similarity). May play a role in apoptosis.

References

Hene L.,et al.Thesis (2001), University of Oxford, United Kingdom.
Akiyama N.,et al.Submitted (JUN-2001) to the EMBL/GenBank/DDBJ databases.
Van Damme P.,et al.Proc. Natl. Acad. Sci. U.S.A. 109:12449-12454(2012).

Images



Anti-CSRNP2 Antibody at 1:1000 dilution + CEM whole cell lysates Lysates/proteins at 20 µg per lane. Secondary Goat Anti-Rabbit IgG, (H+L), Peroxidase conjugated at 1/10000 dilution Predicted band size : 60 kDa
Blocking/Dilution buffer: 5% NFDM/TBST.

Please note: All products are 'FOR RESEARCH USE ONLY. NOT FOR USE IN DIAGNOSTIC OR THERAPEUTIC PROCEDURES'.