

Cystatin B Antibody

Purified Rabbit Polyclonal Antibody (Pab)

Catalog # AP51123

Product Information

Application	WB
Primary Accession	P04080
Reactivity	Human
Host	Rabbit
Clonality	Polyclonal
Calculated MW	11140

Additional Information

Gene ID	1476
Other Names	Cystatin-B, CPI-B, Liver thiol proteinase inhibitor, Stefin-B, CSTB, CST6, STFB
Target/Specificity	KLH-conjugated synthetic peptide encompassing a sequence within the center region of human Cystatin B. The exact sequence is proprietary.
Dilution	WB~~ 1:1000
Format	0.01M PBS, pH 7.2, 0.09% (W/V) Sodium azide, Glycerol 50%
Storage	Store at -20 °C.Stable for 12 months from date of receipt

Protein Information

Name	CSTB
Synonyms	CST6, STFB
Function	This is an intracellular thiol proteinase inhibitor. Tightly binding reversible inhibitor of cathepsins L, H and B.
Cellular Location	Cytoplasm. Nucleus

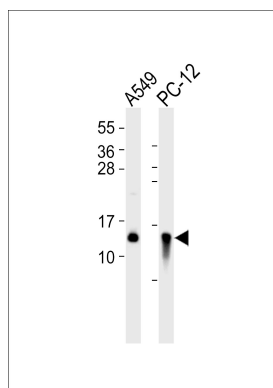
Background

This is an intracellular thiol proteinase inhibitor. Tightly binding reversible inhibitor of cathepsins L, H and B.

References

Ritonja A.,et al.Biochem. Biophys. Res. Commun. 131:1187-1192(1985).
Pennacchio L.A.,et al.Science 271:1731-1734(1996).
Bhat K.S.,et al.Submitted (MAY-1993) to the EMBL/GenBank/DDBJ databases.
Hattori M.,et al.Nature 405:311-319(2000).
Riccio M.,et al.Exp. Cell Res. 262:84-94(2001).

Images



All lanes : Anti-Cystatin B Antibody at 1:1000 dilution Lane
1: A549 whole cell lysates Lane 2: PC-12 whole cell lysates
Lysates/proteins at 20 µg per lane. Secondary Goat
Anti-Rabbit IgG, (H+L), Peroxidase conjugated at 1/10000
dilution Predicted band size : 11 kDa Blocking/Dilution
buffer: 5% NFDM/TBST.

Please note: All products are 'FOR RESEARCH USE ONLY. NOT FOR USE IN DIAGNOSTIC OR THERAPEUTIC PROCEDURES'.