

PECI Antibody

Purified Rabbit Polyclonal Antibody (Pab)

Catalog # AP51175

Product Information

| | |
|-------------------|------------------------|
| Application | WB |
| Primary Accession | O75521 |
| Reactivity | Human |
| Host | Rabbit |
| Clonality | Polyclonal |
| Calculated MW | 43585 |

Additional Information

| | |
|--------------------|---|
| Gene ID | 10455 |
| Other Names | Enoyl-CoA delta isomerase 2, mitochondrial, DRS-1, Delta(3), delta(2)-enoyl-CoA isomerase, D3, D2-enoyl-CoA isomerase, Diazepam-binding inhibitor-related protein 1, DBI-related protein 1, Dodecenoyl-CoA isomerase, Hepatocellular carcinoma-associated antigen 88, Peroxisomal 3, 2-trans-enoyl-CoA isomerase, pECI, Renal carcinoma antigen NY-REN-1, ECI2, DRS1, HCA88, PECI |
| Target/Specificity | KLH-conjugated synthetic peptide encompassing a sequence within the center region of human PECI. The exact sequence is proprietary. |
| Dilution | WB~~ 1:1000 |
| Format | 0.01M PBS, pH 7.2, 0.09% (W/V) Sodium azide, Glycerol 50% |
| Storage | Store at -20 °C.Stable for 12 months from date of receipt |

Protein Information

| | |
|-------------------|---|
| Name | ECI2 |
| Synonyms | DRS1, HCA88, PECI {ECO:0000303 PubMed:10 |
| Function | Able to isomerize both 3-cis and 3-trans double bonds into the 2-trans form in a range of enoyl-CoA species. Has a preference for 3-trans substrates. |
| Cellular Location | [Isoform 1]: Mitochondrion {ECO:0000250 UniProtKB:Q5XIC0} |
| Tissue Location | Abundant in heart, skeletal muscle and liver. Expressed in CD34(+) T-cells and CD34(+) bone marrow cells |

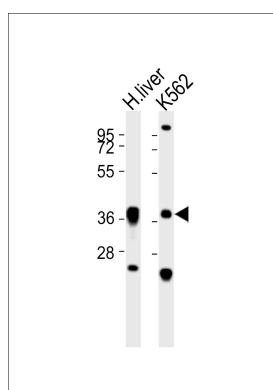
Background

Able to isomerize both 3-cis and 3-trans double bonds into the 2-trans form in a range of enoyl-CoA species. Has a preference for 3-trans substrates (By similarity).

References

Suk K.,et al.Biochim. Biophys. Acta 1454:126-131(1999).
Wiemann S.,et al.Genome Res. 11:422-435(2001).
Ota T.,et al.Nat. Genet. 36:40-45(2004).
Mungall A.J.,et al.Nature 425:805-811(2003).
Geisbrecht B.V.,et al.J. Biol. Chem. 274:21797-21803(1999).

Images



All lanes : Anti-PECI Antibody at 1:1000 dilution Lane 1:
H.liver tissue lysates Lane 2: K562 whole cell lysates
Lysates/proteins at 20 µg per lane. Secondary Goat
Anti-Rabbit IgG, (H+L), Peroxidase conjugated at 1/10000
dilution Predicted band size : 44 kDa Blocking/Dilution
buffer: 5% NFDM/TBST.

Please note: All products are 'FOR RESEARCH USE ONLY. NOT FOR USE IN DIAGNOSTIC OR THERAPEUTIC PROCEDURES'.