

# Endothelin A Receptor Antibody

Purified Rabbit Polyclonal Antibody (Pab)

Catalog # AP51176

## Product Information

---

Application	WB
Primary Accession	<a href="#">P25101</a>
Reactivity	Human
Host	Rabbit
Clonality	Polyclonal
Calculated MW	48722

## Additional Information

---

Gene ID	1909
Other Names	Endothelin-1 receptor, Endothelin A receptor, ET-A, ETA-R, hET-AR, EDNRA, ETA, ETRA
Target/Specificity	KLH-conjugated synthetic peptide encompassing a sequence within the C-term region of human Endothelin A Receptor. The exact sequence is proprietary.
Dilution	WB~~ 1:1000
Format	0.01M PBS, pH 7.2, 0.09% (W/V) Sodium azide, Glycerol 50%
Storage	Store at -20 °C.Stable for 12 months from date of receipt

## Protein Information

---

Name	EDNRA ( <a href="#">HGNC:3179</a> )
Synonyms	ETA, ETRA
Function	Receptor for endothelin-1. Mediates its action by association with G proteins that activate a phosphatidylinositol-calcium second messenger system. The rank order of binding affinities for ET-A is: ET1 > ET2 >> ET3.
Cellular Location	Cell membrane; Multi-pass membrane protein.
Tissue Location	Isoform 1, isoform 3 and isoform 4 are expressed in a variety of tissues, with highest levels in the aorta and cerebellum, followed by lung, atrium and cerebral cortex, lower levels in the placenta, kidney, adrenal gland, duodenum, colon, ventricle and liver but no expression in umbilical vein endothelial cells. Within the placenta, isoform 1, isoform 2, isoform 3 and isoform 4 are expressed in the villi and stem villi vessels.

## Background

---

Receptor for endothelin-1. Mediates its action by association with G proteins that activate a phosphatidylinositol- calcium second messenger system. The rank order of binding affinities for ET-A is: ET1 > ET2 >> ET3.

## References

---

Adachi M.,et al.Biochem. Biophys. Res. Commun. 180:1265-1272(1991).

Cyr C.,et al.Biochem. Biophys. Res. Commun. 181:184-190(1991).

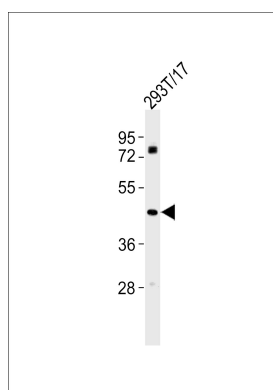
Hosoda K.,et al.FEBS Lett. 287:23-26(1991).

Arai H.,et al.Jpn. Circ. J. 56:1303-1307(1992).

Elshourbagy N.A.,et al.J. Biol. Chem. 268:3873-3879(1993).

## Images

---



Anti-Endothelin A Receptor Antibody at 1:1000 dilution + 293T/17 whole cell lysates. Lysates/proteins at 20 µg per lane. Secondary Goat Anti-Rabbit IgG, (H+L), Peroxidase conjugated at 1/10000 dilution. Predicted band size : 49,36,24 kDa. Blocking/Dilution buffer: 5% NFDM/TBST.

Please note: All products are 'FOR RESEARCH USE ONLY. NOT FOR USE IN DIAGNOSTIC OR THERAPEUTIC PROCEDURES'.