

# EIF4G2 Antibody

Purified Rabbit Polyclonal Antibody (Pab)

Catalog # AP51184

## Product Information

---

<b>Application</b>	WB
<b>Primary Accession</b>	<a href="#">P78344</a>
<b>Reactivity</b>	Human, Mouse, Rat
<b>Host</b>	Rabbit
<b>Clonality</b>	Polyclonal
<b>Calculated MW</b>	102362

## Additional Information

---

<b>Gene ID</b>	1982
<b>Other Names</b>	Eukaryotic translation initiation factor 4 gamma 2, eIF-4-gamma 2, eIF-4G 2, eIF4G 2, Death-associated protein 5, DAP-5, p97, EIF4G2 ( <a href="#">HGNC:3297</a> )
<b>Target/Specificity</b>	KLH conjugated synthetic peptide derived from human EIF4G2
<b>Dilution</b>	WB~~ 1:1000
<b>Format</b>	0.01M PBS, pH 7.2, 0.09% (W/V) Sodium azide, Glycerol 50%
<b>Storage</b>	Store at -20 °C.Stable for 12 months from date of receipt

## Protein Information

---

<b>Name</b>	EIF4G2 ( <a href="#">HGNC:3297</a> )
<b>Function</b>	Appears to play a role in the switch from cap-dependent to IRES-mediated translation during mitosis, apoptosis and viral infection. Cleaved by some caspases and viral proteases.
<b>Tissue Location</b>	Ubiquitously expressed in all adult tissues examined, with high levels in skeletal muscle and heart. Also expressed in fetal brain, lung, liver and kidney.

## Background

---

Appears to play a role in the switch from cap-dependent to IRES-mediated translation during mitosis, apoptosis and viral infection. Cleaved by some caspases and viral proteases.

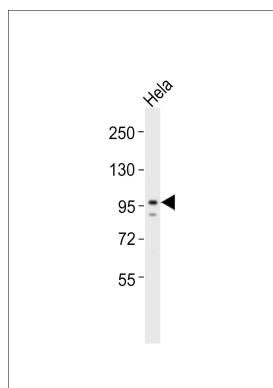
## References

---

Imataka H.,et al.EMBO J. 16:817-825(1997).  
Yamanaka S.,et al.Genes Dev. 11:321-333(1997).  
Levy-Strumpf N.,et al.Mol. Cell. Biol. 17:1615-1625(1997).  
Totoki Y.,et al.Submitted (APR-2005) to the EMBL/GenBank/DDBJ databases.  
Taylor T.D.,et al.Nature 440:497-500(2006).

## Images

---



Anti-EIF4G2 Antibody at 1:1000 dilution + HeLa whole cell lysates Lysates/proteins at 20 µg per lane. Secondary Goat Anti-Rabbit IgG, (H+L), Peroxidase conjugated at 1/10000 dilution Predicted band size : 102 kDa Blocking/Dilution buffer: 5% NFDm/TBST.

Please note: All products are 'FOR RESEARCH USE ONLY. NOT FOR USE IN DIAGNOSTIC OR THERAPEUTIC PROCEDURES'.