

GRP94 Antibody

Purified Rabbit Polyclonal Antibody (Pab)

Catalog # AP51268

Product Information

| | |
|-------------------|------------------------|
| Application | WB |
| Primary Accession | P14625 |
| Reactivity | Human |
| Host | Rabbit |
| Clonality | Polyclonal |
| Calculated MW | 92469 |

Additional Information

| | |
|--------------------|---|
| Gene ID | 7184 |
| Other Names | Endoplasmin, 94 kDa glucose-regulated protein, GRP-94, Heat shock protein 90 kDa beta member 1, Tumor rejection antigen 1, gp96 homolog, HSP90B1, GRP94, TRA1 |
| Target/Specificity | KLH conjugated synthetic peptide derived from human GRP94 |
| Dilution | WB~~ 1:1000 |
| Format | 0.01M PBS, pH 7.2, 0.09% (W/V) Sodium azide, Glycerol 50% |
| Storage | Store at -20 °C.Stable for 12 months from date of receipt |

Protein Information

| | |
|-------------------|---|
| Name | HSP90B1 {ECO:0000303 PubMed:39509507, ECO:0000312 HGNC:HGNC:12028} |
| Function | ATP-dependent chaperone involved in the processing of proteins in the endoplasmic reticulum, regulating their transport (PubMed: 23572575 , PubMed: 39509507). Together with MESD, acts as a modulator of the Wnt pathway by promoting the folding of LRP6, a coreceptor of the canonical Wnt pathway (PubMed: 23572575 , PubMed: 39509507). When associated with CNPY3, required for proper folding of Toll-like receptors (PubMed: 11584270). Promotes folding and trafficking of TLR4 to the cell surface (PubMed: 11584270). May participate in the unfolding of cytosolic leaderless cargos (lacking the secretion signal sequence) such as the interleukin 1/IL-1 to facilitate their translocation into the ERGIC (endoplasmic reticulum- Golgi intermediate compartment) and secretion; the translocation process is mediated by the cargo receptor TMED10 (PubMed: 32272059). |
| Cellular Location | Endoplasmic reticulum lumen. Sarcoplasmic reticulum lumen |

{ECO:0000250|UniProtKB:P41148}. Melanosome Note=Identified by mass spectrometry in melanosome fractions from stage I to stage IV.

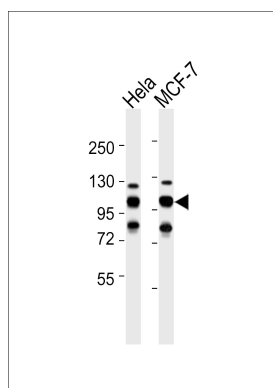
Background

Molecular chaperone that functions in the processing and transport of secreted proteins. When associated with CNPY3, required for proper folding of Toll-like receptors (By similarity). Functions in endoplasmic reticulum associated degradation (ERAD). Has ATPase activity.

References

Maki R.G.,et al.Proc. Natl. Acad. Sci. U.S.A. 87:5658-5662(1990).
Chang S.C.,et al.Mol. Cell. Biol. 9:2153-2162(1989).
Meng S.,et al.Submitted (JUN-2001) to the EMBL/GenBank/DDBJ databases.
Gevaert K.,et al.Nat. Biotechnol. 21:566-569(2003).
Meunier L.,et al.Mol. Biol. Cell 13:4456-4469(2002).

Images



All lanes : Anti-GRP94 Antibody at 1:1000 dilution Lane 1: HeLa whole cell lysates Lane 2: MCF-7 whole cell lysates Lysates/proteins at 20 µg per lane. Secondary Goat Anti-Rabbit IgG, (H+L), Peroxidase conjugated at 1/10000 dilution Predicted band size : 92 kDa Blocking/Dilution buffer: 5% NFDM/TBST.

Please note: All products are 'FOR RESEARCH USE ONLY. NOT FOR USE IN DIAGNOSTIC OR THERAPEUTIC PROCEDURES'.